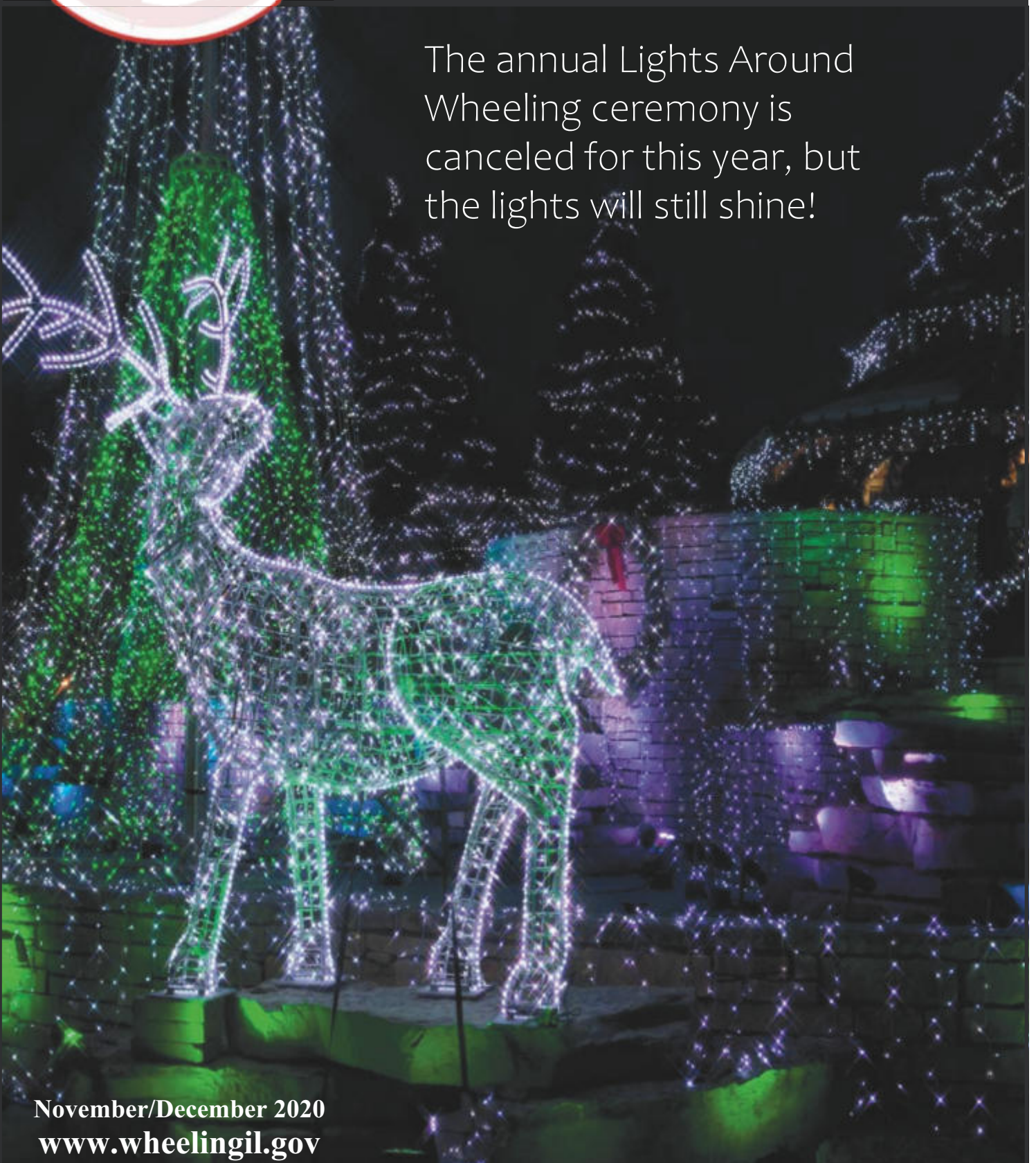




THE WHEELING CIRCULAR

*Revolving Around
Community*

The annual Lights Around Wheeling ceremony is canceled for this year, but the lights will still shine!



November/December 2020
www.wheelingil.gov

WELCOME TO WHEELING



*President
Patrick Horcher*

From the Desk of President Horcher

As we approach the end of a very unusual and challenging year, I'd like to express the Village's appreciation for the patience and responsible conduct of our residents during the ongoing pandemic. I also feel very grateful to be serving as president with a staff that has continued to serve so admirably through every challenge this last year has thrown at them. As the weather turns colder and outdoor gatherings become less practical, our commitment to social distancing and other common-sense precautions becomes even more important—and it does so at the very time of year when we're accustomed to gathering with friends and family. Thanks in advance for keeping the health of others in mind during the upcoming holiday season!

As always, I also encourage you to find safe ways to support Wheeling businesses—both new arrivals and old favorites—as they work to make ends meet. Village staff has created a map-based Interactive Dining Guide that you can access from a computer, tablet, or smartphone at www.wheelingil.gov/dining; it includes phone numbers, street addresses, websites, delivery availability, and additional information for over 80 Wheeling food and beverage businesses. Take a look at the Guide, share it with friends, explore Wheeling's diverse dining scene, and support our local culinary community.

The Village itself recently received support in the form of over \$600,000 in Coronavirus Aid, Relief, and Economic Security (CARES) Act funds distributed through Cook County as reimbursement for pandemic-related expenses. Although that amount won't offset the revenue we've lost in the global economic downturn, the Village's finances remain sound, and we're still maintaining our service levels while making prudent investments to ensure our ability to do so in the future. These include the replacement of Fire Station 23 at 780 South Wheeling Road, an over-40-year-old facility that had reached the end of its useful life; the old station has been demolished, and a new one is under construction on the same site. While the project is underway, Fire crews normally based at that location are operating out of the nearby MABAS Division 1 facility on Hintz Road, so emergency services won't be interrupted.



Demolition of the old Fire Station 23 recently took place to make room for a new station.

We're also making progress on two other projects intended to give our residents additional peace of mind. Although our water system is well-maintained and consistently exceeds federal and state standards, the Village has proactively undertaken the replacement of the 110 known lead service lines remaining in Wheeling; this project is partially funded through a loan forgiveness program through the State of Illinois and a grant from the Northwest Water Commission. We're also nearing the end of a multi-year process of updating the floodplain maps maintained by the Federal Emergency Management Agency (FEMA); the results, which take into account the Village's significant recent achievements in stormwater control, may remove over 700 properties from the floodplain, potentially reducing their owners' insurance expenses.

Private-sector development continues to make headway, as well. The Landing on Dundee—the new senior-living facility next to Shir Hadash Synagogue and across from Saint Joseph the Worker Catholic Church—has had its long-awaited opening. New residents continue to move into the residential units of Uptown 500, the transit-oriented mixed-use project at the northwest corner of Dundee and Northgate Parkway, while construction continues on its commercial units. And both Arctic Spoon—which specializes in rolled ice cream, bubble tea, and smoothies—and Mexican restaurant Mia's Cantina have now opened for business in the Wheeling Town Center, joining the other dining, service, and entertainment options there. I strongly encourage you to pay them a visit.

I normally close the November letter with an invitation to Lights Around Wheeling, our annual holiday lighting ceremony, but of course this is not a normal year, and we've canceled the event in keeping with social distancing concerns. Rest assured that the lights will still be coming on, and we hope that whenever you see them you'll be reminded that the Village's employees and officials are hard at work on behalf of the community, and wishing you and your loved ones good health and good cheer.

2 The Village Board and staff wish you and your family a safe and happy holiday season!

WELCOME TO WHEELING



Health Happenings

Community Blood Drive & COVID-19 Antibody Testing

The Wheeling Board of Health is hosting a blood drive and will be testing for COVID-19 antibodies (only with a full blood donation) from 2 to 7 p.m. on Wednesday, November 11 at the Village Hall. Please note that masks will be required and beds will be six feet apart.

Blood donors of all types are needed for critically ill patients, accident victims, people needing surgery, and patients suffering from chronic diseases such as cancer and leukemia. Every pint of blood donated will help save three lives!

To schedule an appointment, contact Health Officer Serena Ivaldi at or 847.499.9048. You may also contact Vitalant at 877.25.VITAL. Due to high demand, appointments will be required. Please join us!

Medication/Sharps Collection

Wheeling provides a medication and sharps collection for all residents. Collections are held on the third Saturday of every month from 10 a.m. until 12 p.m. in front of the Police Station at 1 Community Boulevard. We accept:

- Prescription and over-the-counter medications in their original containers. No over-the-counter liquid medications will be accepted. We cannot accept any controlled substances. Visit www.swancc.org for a list of all controlled substances.
 - ◆ Keep pharmaceuticals in their original containers with labels to identify contents.
 - ◆ Use a permanent marker to cross out your name and other personal information.
- Sharps (needles and syringes) in rigid containers with a sealed lid. Sharps containers will be handed out at the collection and are available at the Community Development Department at Village Hall.

We also accept the following:

- Household and rechargeable batteries. No automotive batteries will be accepted. Each rechargeable battery must have masking tape on contact points or be contained in an individual self-locking plastic bag.
- Glasses, including eyeglasses, sunglasses, and telescopic, magnifying, and prescription glasses. Children's glasses are especially needed and will be given to a program called "Recycle for Sight" which refurbishes eyeglasses for those in need.

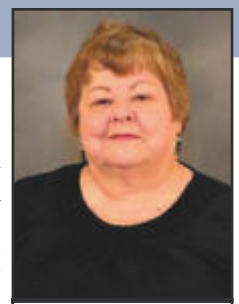
*IF THERE IS A WINTER ADVISORY ON THE DAY OF A MEDICATION/SHARPS COLLECTION, THE DROP-OFF WILL BE CANCELLED AND NOT RESCHEDULED. No one will be available to accept the medications or sharps; do not leave items at the Police Department.

Contact Health Officer Serena Ivaldi at 847.499.9048 if you have any questions.

The Clerk's Corner

Now that the weather is getting cooler, please continue to visit the restaurants in the village. Many of them have installed tents and heaters. I was never a person to eat outside but I have to say, this past summer and fall I have totally enjoyed eating at these restaurants outside. If you are uncomfortable eating inside or outside, many have curbside pick-up and some have delivery to your home. I am an observant person when I go to restaurants and businesses, and I want to say that they are all doing a great job of following the guidelines of the State of Illinois. They go the extra step.

Due to the COVID-19 guidelines of the State of Illinois, the Historical Society of the Village of Wheeling for the first time in its history will not be having Lollipop Lane this year. We have waited until the very last moment before making this decision. The church area is very tight, and with the people that come to see Santa it would be impossible to keep social distancing. We are looking forward to seeing you all next year.



Village Clerk
Elaine E. Simpson

Wishing you a very happy holiday season and may the New Year bring you nothing but happiness!

Most of all, be safe and follow the guidelines.

POLICE & FIRE DEPARTMENTS

Cyber Security in an Insecure World

Cybercrime is a relatively new phenomenon that is just as destructive as the traditional crime we know all too well. In some cases, it's much worse, as people's bank accounts, retirement accounts, and investment accounts are potentially at risk.

Whether it's done through email, phone, texting, or some other method, criminals continue to find new ways to separate honest people and businesses from their wealth. In teaching cybersecurity over the years, Wheeling Crime Prevention personnel have hammered home the message that people shouldn't click links in emails or open attachments from untrusted sources. But that's only half the battle in today's uncharted waters. It's never been more important to take steps to protect ourselves.

How Do They Get Your Information?

- Security Breaches
- Phishing. Phishing involves the use of trickery to get a person to divulge personal, sensitive, or confidential information. Very often it is done via email, asking a person to click a link or open an attachment.
- Spear Phishing. This method works just like regular Phishing, but targets a specific person and appears to be from a trusted sender.
- Vishing. Involves the use of Voice over Internet Protocol telephone service (VoIP). Callers claiming to be from the Social Security Administration are a common scam, although there are many variations. Using fear, they convince victims to send money, divulge personal information, etc. They can even make their phone numbers appear authentic on caller ID.
- Social Engineering and SIM Swapping. Social Engineering involves a criminal posing as you on the phone, attempting to make changes to your account. In the case of SIM Swapping, they pose as you, claiming they need to port your mobile phone number over to a new device and that new device's SIM card. Thus your phone number is under their control, your physical device loses service, and your SIM card goes dead. Once completed, any codes sent to your phone number from your accounts will go directly to the criminal's device.

What Can They Do With Your Information?

Once they have your account usernames and passwords, they have a very good chance of accessing those accounts. In addition, if you are one of the millions of people that use the same usernames and passwords for multiple accounts, there is a very good chance they will access your other accounts as well. The result could be nothing short of financial havoc and potential ruin.

How Do You Protect Yourself?

Give your passwords a boost. Are you using your birth year as a password? Your maiden name? Your dog's name? These passwords are weak and extremely vulnerable. Maybe you use a complicated password, but use it on all your accounts? Also very dangerous. The FBI recommends that "instead of using a short, complex password that is hard to remember, consider using a longer passphrase. This involves combining multiple words into a long string of at least 15 characters. The extra length of a passphrase makes it harder to crack while also making it easier for you to remember."

Are Strong Passwords Enough?

Having a strong, secure password is just the first step. Everyone should also be using Two-Factor Authentication, requiring "something you know" (password/passphrase) and "something you have" (a security key, cellphone, or another piece of hardware). The criminal would need both to access your account, which significantly enhances your security.

How Am I Going To Remember All These New, Stronger Passwords?

Password Managers store all of your passwords in a secure place. In order to access your Password Manager, you need remember only one strong passphrase to access the program. Experts agree that the risk of "having all of your eggs in one basket" by using a Password Manager is still safer than the risk of not doing so. A simple internet search will reveal a plethora of Password Managers to choose from, as well as the pros and cons of each.

Is There Anything Else I Need To Do?

Taking all these steps won't help you if your computer has been compromised and isn't safe. Be sure to have anti-virus and anti-spamware installed on all your computers and update and run them regularly. And back up all your data!

Questions? Please contact the Wheeling Police Crime Prevention Unit at 847-459-2994 or email

4 crimeprevention@wheelingil.gov.

HUMAN SERVICES DEPARTMENT

COVID-19 Assistance

These have been very challenging times. Even after the COVID-19 pandemic lessens its grip on our community, there may be lasting effects for all of us. If you or someone you know is in need of resources to make it through this tough time, the Human Services Department is here to help. Our department has social workers available to provide information and referrals for whatever need you may have. Our staff has been working through the pandemic, providing services by phone and also video-conferencing when necessary.



Some of the programs available for Village of Wheeling residents include:

- Wellness calls to homebound older adults. Staff calls more than 150 residents on a weekly basis to check on them and to offer a friendly voice and important information.
- Hot meals and frozen/reheatable meals for older adults are available on Mondays, Wednesdays, and Fridays. Approximately 500 meals are distributed to older adults every week. Staff has also distributed more than 9,500 shelf-stable and frozen meals since March. If you or someone you know is 60+ and could benefit from these meals, please call our office at 847.459.2606. Please note that the location for pick-up of these meals has changed from the Village Hall to the Wheeling Park District Aquatic Center.

For additional information regarding our programs, or for information on state and federal assistance related to the COVID-19 crisis, please visit www.wheelingil.gov or call our office at 847.459.2606. Se habla Español.

Holiday Donations Needed

At times throughout the year, the Village of Wheeling Human Services Department provides economic support to families in need. This support is in the form of gift cards to local stores such as Walmart, Aldi, Walgreens, CVS, etc. The Human Services Department receives these cards as donations from civic groups and generous residents. These cards are used when residents have difficulties making ends meet during a crisis. The year 2020 has been extremely difficult for residents dealing with the pandemic and the economic downturn, and our supply of gift cards has been severely impacted by the community need. If you are in a position to make a donation of a gift card to support another Wheeling resident, please consider giving this year. If you know someone in the Village that is in need of resources during this trying time, please refer them to our department. Please call 847.459.2606. Social workers are available Monday–Friday 9 a.m.–5 p.m.



Lunch @ The Center Has Meals To Go!

In light of the ever-changing situation regarding the coronavirus pandemic, and with the priority of keeping our senior community safe, changes have been made to the congregate dining program, Lunch at the Center. Onsite congregate dining and hot meal distribution has been temporarily suspended in favor of distributing shelf-stable meals on a weekly basis.

Until dining can take place in-person again, hot and reheatable meals will be available for pickup from the Wheeling Park District Aquatic Center (please note location change). If you or someone you know is 60 years or better and would like to be added to the list for meal pickup, please call Dining Coordinator Jesus Delgado at 847.650.0650 or Diana Murillo at 847.459.2606 Monday through Friday between 8 a.m. and 4 p.m.

If you don't have access to transportation to pick up meals, please call for help receiving your meals. We hope to resume our usual program as soon as it is safe to do so. Stay safe!



**AVAILABLE
FOR A LIMITED TIME**

**ADVERTISE YOUR
BUSINESS
HERE**

Contact **Duane Budelier** to place
an ad today! dbudelier@4LPi.com
or **(800) 950-9952 x2525**

**PROTECTING SENIORS NATIONWIDE
MEDICAL ALERT SYSTEM**



\$29.95/MO
BILLED
QUARTERLY

PLUS
SPECIAL
OFFER

CALL NOW!
1.877.801.7772
WWW.24-7MEDALARM.COM

**ADT-Monitored
Home Security**

Get 24-Hour Protection
From a Name You Can Trust

- Burglary
- Flood Detection
- Fire Safety
- Carbon Monoxide



ADT
Authorized
Provider

SafeStreets 1-855-225-4251



Space available
3000 sq ft - 1750 sq ft • 7300 sq. ft.
May divide. Call with Size Requirements

- Tenant Roster**
- Boost Mobile
 - Carniceria Jimenez
 - Concentra Medical, P.T/O.T.
 - Fabulous Hair Salon
 - Familia Dental
 - Five Star Nails
 - Little Caesars Pizza
 - Mark Drug & Medical Supply
 - Northwest Insurance Network
 - SalonCentric
 - Stella's
 - Turner Finance
 - 1900's Barber Parlor

- Across the street from 1000 new apartments
- Across the street from the New Town Center
- Anchored by Carniceria Jimenez with 37,100 sq. ft.
- Across from Metra Station
- Daily traffic count of 70,000 cars
- Market includes Buffalo Grove, Northbrook, Prospect Heights & Arlington Heights
- Parking for over 400 cars
- Easy access from Rt. 53, 1-94 & I-294
- Excellent retail visibility

Demographics

1 Mile	3 Miles	5 Miles
Average Income \$85,088	\$107,330	\$116,180
Population 17,382	103,722	274,540

A \$5,000 donation will be given to the Leukemia Research Foundation for each store leased through this ad.

Hallmark & Johnson For information call:
Mike or Jeff Kolodny 773-777-6160
Not affiliated with Hallmark & Johnson Properties, Lincolnwood



**UPGRADE TO A
VIBRANT
ad**

Contact us for details
800-950-9952

**Love & Respect,
Dream Building Too
Safe, Cheerful, Warm
Our Promise to You**

Family Owned Since 1966

Serving the Wheeling Community Since 1983

Family Owned since 1965
Ages 6 weeks - 12 Years
6:30 a.m. until 6:00 p.m.
404 S. Elmhurst Rd • Wheeling IL 60090
847-520-4466 • www.pokolokochildcare.com

Family Owned Since 1966

JOE'S PIZZERIA
Wheeling
847-537-1477

Visit our web site for a full menu
Awesome Video Gaming
www.joespizzaUSA.com

Ranked 2nd with Hungry Hound

10% OFF coupon for your order today
expiration 6/30/2020

SPREAD THE WORD

**A Thriving, Vibrant
Community Matters**



SUPPORT OUR ADVERTISERS

COMMUNITY DEVELOPMENT & PUBLIC WORKS

Snow Season Procedures

Public Works personnel are preparing for snow control with salt deliveries, vehicle preparation, and year-round training. Snow and ice responsibilities include roadway de-icing and clearing arterial, collector, and residential roadways, certain sections of public sidewalks, the train station, and Village-owned buildings and properties.

Public Works is not responsible for the maintenance of or snow control on county- or state-owned roadways or rights-of-way. These roadways include:

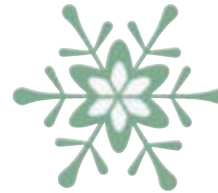
Illinois Department of Transportation (IDOT) 847-705-4222

- Dundee Road (Route 68)
- Milwaukee Avenue (Route 21)
- Palatine Road including East and West Palatine frontage
- Wolf Road (Manchester North to Milwaukee Avenue; South of Marquardt to Camp McDonald Road)
- Elmhurst Road (Route 83)
- McHenry Road (Route 83)



Cook County Highway Department 847-827-1164

- Lake-Cook Road
- Hintz Road
- Buffalo Grove Road
- Aptakisic Road
- Schoenbeck Road
- Camp McDonald Road
- Old Buffalo Grove Road



Residents are advised of the following safety tips during the snow season:

- Stay 100 feet or more behind a snowplow or salt truck.
- When it is safe, shovel snow away from fire hydrants near your property for emergency access.
- Do not place refuse, refuse containers, or any other items in the street.

Vehicle Parking Restrictions

- Do not park on any Village street within eight hours after a snowfall of two inches or more to allow safe and efficient snow and ice control by Public Works.
- Vehicles in violation of this restriction may be towed by the Police Department.
- For additional information, contact the Wheeling Police Department at 847.459.2632.



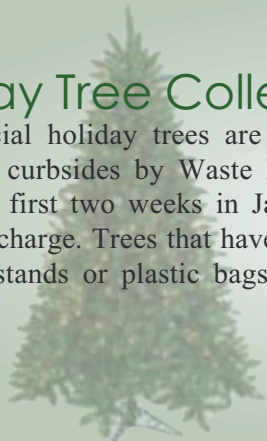
Sidewalk Requirements

- Residents and property owners are responsible for clearing snow and ice from sidewalks adjoining or adjacent to their property by 10 a.m. the day after a snowfall. Property owners are permitted to spread sand, salt, or other substances made for the purpose of melting snow and ice on sidewalks.
- Residents and property owners shall not deposit snow or ice onto any roadway within the Village; instead, deposit snow and ice onto the parkway.

For additional information, contact Community Development at 847.459.2620.

Holiday Tree Collections

Non-artificial holiday trees are collected at residential curbsides by Waste Management during the first two weeks in January at no additional charge. Trees that have decorations or are in stands or plastic bags will not be collected.



Holiday Lights Recycling Program

Residents may recycle holiday lights—including mini, C7, C9, rope, and LED lights as well as extension cords of all colors and lengths—at the Department of Public Works, 77 W. Hintz Road, November 1, 2020 to February 1, 2021 Monday through Friday from 7 a.m. to 3 p.m. Garland, live greens, wreaths, and other non-recyclables are not accepted in this recycling program. Contact 847.279.6900 with any questions.

Guidelines for Leaf Disposal

Village Code 11.08.100 prohibits the deposit of leaves into streets, roads, or highways, and along the shoulder, curb, or edge of any street, road, or highway.

Leaves intentionally raked into such areas can result in clogged storm sewer drains and subsequent flooding.

The Village's contract with Waste Management provides an alternate, convenient method to dispose of leaves and other forms of yard waste for residents of single-family homes.

In addition to two-ply Kraft biodegradable paper yard waste bags, residents may use rigid 32-gallon containers clearly marked with a red "X" around the container.

Containers and biodegradable bags, when filled, may not exceed 50 pounds in weight. There is no limit to the number of yard waste bags or containers allowed.

Yard waste in plastic bags or cardboard boxes will not be collected.

Brush must be bundled and tied with biodegradable twine or string. Bundles must not weigh over 50 lbs., exceed four feet in length or two feet in diameter, or contain limbs greater than three inches in diameter. There is no limit to the number of brush bundles allowed.

Loose or larger brush or logs will not be collected by Waste Management.

Yard waste collections conclude on November 30, 2020.

Protect Water Lines from Freezing

Follow these measures to protect water lines from freezing and prevent water pipes from rupturing during extreme cold:



- Monitor water meters:** Wrap water meters with foam insulation or heat tape if located in unheated or colder areas such as crawlspaces. Periodically check your meter and associated piping for cracks or leaks and ensure proper marking and operation of the shut-off valve in case a pipe bursts.

- Eliminate drafts:** All crawlspace and basement vents, windows, and doors should be repaired and closed, making sure a tight seal exists to keep out cold air.

- Insulate pipes:** Insulating pipes in colder or unheated areas such as the crawlspace, or pipes located adjacent to an outside wall, helps to reduce the possibility of ruptured pipes. Allow warm air to circulate around pipes accessible by cabinets and located against outside walls.

- Leave faucets running:** Keeping a continuous trickle of cold water running can help reduce the possibility of a pipe bursting due to freezing.

If you know that a property has been unoccupied for several days, contact the Public Works Utility Division at 847.279.6900 so they can verify if water services are shut off at the property. This can prevent costly damage to the unoccupied property.

Burning Landscape Waste is Illegal in Wheeling

The burning of construction debris, garbage, paper, and landscape waste including leaves, twigs, and damaged tree limbs is not only environmentally unhealthy and prone to causing accidental fires, it is also illegal in Wheeling. Violators are subject to citations and fines. Please use the weekly landscape waste collection program outlined above to dispose of landscape debris.

Outdoor Fireplace Regulations

- Only dry, well-seasoned natural wood logs may be burned in an approved outdoor fireplace.

- Use in accordance with the manufacturer's operating instructions.

- Keep all portable fireplaces a minimum of 15 feet from combustible structures, playground equipment, and nearby vehicles.

- Never use gasoline to start an outdoor fireplace.

- A responsible adult must remain nearby with a fire extinguisher, a bucket of water, or an attached garden hose in case the fire accidentally grows too large or embers ignite anything outside of the fireplace.

- Remember to be a good neighbor when using an outdoor fireplace. Please be respectful and cooperative with your neighbors by extinguishing your outdoor fireplace if it adversely impacts your neighbor's health and well-being.

Holiday Solid Waste Collection Reminder

In observance of Thanksgiving Day, November 26, 2020, and Christmas Day, December 25, 2020, solid waste collections will be delayed by one day.

COMMUNITY NEWS & EVENTS

Change your batteries, save your family



On **Sunday, November 1**, we will once again move our clocks backwards as part of Daylight Saving Time. It is also an excellent reminder to once again change the batteries in your smoke and carbon monoxide detectors. These are the hardest-working appliances in your home, protecting your family every second of every day. Make sure they work by changing their batteries (if applicable), vacuuming them, and testing them. If your smoke detectors are more than ten years old, or you are not sure how old they are, replace them with a newer sealed ten-year device. If your carbon monoxide detectors are more than five years old, or you are not sure how old they are, replace them with a newer sealed ten-year device or a newer combination smoke detector/carbon monoxide detector device. All of the newer devices have sealed batteries and no longer require annual replacement; after ten years of use, you just dispose of them. A few minutes of your time now can mean the difference between life and death should a fire occur in your home later on.

Welcome New Businesses!

All American Swim
830 Seton Court, Unit 8
Swim accessories retail
224.676.0344

The Learning Experience
343 W. Dundee Road
Child daycare
847.718.8067

Arctic Spoon
371 W. Dundee Road
Ice cream shop
224.715.3182

Majestic Tiles LMP, Inc.
466 Diens Drive
Tile sales
773.319.4952

The Ark Restoration, Inc.
540 Allendale Drive, Ste. 208
General contractor
847.461.9900

**Mike's Auto
Repair & Sales**
240 Industrial Lane, Ste. 6
Automotive repair
773.319.4952

Elsa's
735 N. Milwaukee Avenue
Video gaming cafe

Mini Donut Factory
1067 Lake Cook Road
Donut shop
847.544.4974

Excel Plumbing
661 Glenn Avenue
Plumbing services
847.509.9330

Sako Studios
520 Quail Hollow Drive,
Unit 500
Art studio
708.363.0230

Hanna Z Interiors
541 N. Wolf Road
Commercial &
residential design
847.948.7492

Skin Story Skin Care
224 S. Milwaukee Ave. Ste. A
Law offices
312.925.9300

**Kramer Construction
& Management**
270 Larkin Drive, Unit D
General contractor
847.818.9419

Yanni Design Studio
1239 Peterson Drive
Special event design
847.419.9999

Medicare Open Enrollment

Every year, Medicare's open enrollment period is October 15 – December 7. Medicare health and drug plans can make changes each year to cost, coverage, and what providers and pharmacies are in their networks. October 15 to December 7 is when all people with Medicare can change their health plans and prescription drug coverage for the following year to better meet their needs.

People in a Medicare health or prescription drug plan should always review the materials their plans send them, like the Evidence of Coverage (EOC) and Annual Notice of Change (ANOC). If their plans are changing, they should make sure their plans will still meet their needs for the following year. If they're satisfied that their current plan will meet their needs and it's still being offered, they don't need to do anything.

New plan information can be obtained by visiting www.medicare.gov, or by calling 1.800.MEDICARE or the Village of Wheeling Senior Services Division at 847.459.2670. Call for an appointment to find the best prescription drug plan for your individual needs for 2021. Appointments are available during open enrollment on Mondays and Thursdays from 9 a.m.–3p.m.

**Village of Wheeling offices
will be closed:
Thursday, November 26
and Friday, November 27
for Thanksgiving
&
Friday, December 25
for Christmas.**

WE ARE HERE TO SERVE YOU!

Village Manager

Jon A. Sfondilis
jsfondilis@wheelingil.gov

Fire Department

499 S. Milwaukee Avenue
847.459.2662 (non-emergency)

- Fire codes
- CPR classes

Police Department

1 Community Blvd.
847.459.2632 (non-emergency)

- Citizens Police Academy
- Graffiti removal
- Neighborhood watch

Human Services

847.459.2606

- Social Services
- Community Assisted Relief Efforts

Public Works Department

77 W. Hintz Road

847.279.6900, 7 a.m. to 3:30 p.m. M - F

- Fire hydrant flushing
- Street/pothole repairs
- Streetlight maintenance
- Snow plowing
- Forestry & landscape
- Sanitary sewer service televising
- Water quality concerns
- Flooding
- Capital Improvements Division
- Cable TV
- Waste Management

Senior Programs

Wheeling Park District
100 Community Boulevard
847.459.2670

847.459.CODE

to report code violations

Village Hall Offices

2 Community Boulevard
www.wheelingil.gov
Phone: 847.459.2600
Fax: 847.459.9692
Open 8 a.m. to 5 p.m. M - F

Administration

847.499.9082

- Village Manager's office
- Liquor licenses
- Voter registration
- Employment opportunities
- Freedom of Information requests,
foia@wheelingil.gov
- Photo submissions, fb@wheelingil.gov

Finance Department

847.459.2627

- Water bills
- Real estate transfer stamps
- Metra parking passes
- Pet licenses

Community Development

847.459.2620

- Building, engineering, sign permits
- Business & rental property licenses
- Building codes & zoning information
- Property maintenance
- Flood maps & zone determination
- Health Division
- Planning Division

Economic Development

847.459.2605

- Available buildings
- Demographics
- Development inquiries
- TIF district information
- 6b tax exemption applications

Fire Prevention Bureau

847.459.2669

- Fire alarm & sprinkler permits
- Inspections

Village Board

Village President Pat Horcher
847.499.9095
phorcher@wheelingil.gov

Clerk Elaine Simpson

847.499.9231

esimpson@wheelingil.gov

Trustees

Mary Krueger: 847.499.9232

mkrueger@wheelingil.gov

Ray Lang: 847.499.9236

rlang@wheelingil.gov

Mary Papantos: 847.499.9235

mpapantos@wheelingil.gov

Jim Ruffatto: 847.499.9233

jruffatto@wheelingil.gov

Joe Vito: 847.499.9234

jvito@wheelingil.gov

Dave Vogel: 847.499.9237

dvogel@wheelingil.gov

Outside Agencies

Wheeling Park District

100 Community Boulevard
847.465.3333

Indian Trails Public Library

355 Schoenbeck Road
847.459.4100

Chicago Executive Airport

847.537.2580

Noise Hotline: 847.537.2580 x 117

Chamber of Commerce

2 Community Blvd., Suite 203
847.541.0170

Wheeling Township

1616 N. Arlington Hts. Rd.
847.259.7730

www.wheelingtowship.com

- Tax Assessor's office
- Senior & disability services
- Public aid



Mary C.
Krueger



Ray
Lang



Mary M.
Papanos



Jim
Ruffatto



Joe
Vito



Dave
Vogel



Jon A.
Sfondilis

PRSR-T-STD
US POSTAGE
PAID
PERMIT NO. 053
WHEELING, IL

ECRWSS

CARRIER ROUTE PRE-SORT

Local Postal Patron
Wheeling, IL 60090

 <p>Hoos Real Estate Group COLDWELL BANKER RESIDENTIAL BROKERAGE</p> <p>Hablo Español! You can own your own home. <i>Dinero disponible para primer comprador!</i> I will help you, call me Marisol! 773.988.0866</p>		 <p>Mr Roof & Remodeling Company</p> <p>Roofing, Windows, Siding, Gutters, Doors, Attic Insulation Residential, Commercial & Industrial Licensed, Insured, Bonded Free Estimates • www.mrroofcompany.com 529 N. Wolf Rd. • Wheeling, IL 60090 (877) 408-5405</p>
<p>AVAILABLE FOR A LIMITED TIME</p> <p>ADVERTISE YOUR BUSINESS HERE</p> <p>Contact Duane Budelier to place an ad today! dbudelier@4LPi.com or (800) 950-9952 x2525</p>	<p>SPREAD THE WORD A Thriving, Vibrant Community Matters</p>  <p>SUPPORT OUR ADVERTISERS</p>	<p>TOP 1% OF SALES IN COLDWELL BANKERS WORLDWIDE NETWORK</p>  <p>Hoos Real Estate Group Real Estate... SIMPLIFIED</p> <p>OVER 100 YEARS EXPERIENCE <i>Connie Hoos</i> ConnieHoos.com <i>se habla español</i></p> <ul style="list-style-type: none">• Expert Market Analysis & Accurate Pricing• Professional Photography• State-Of-The-Art Marketing Materials• Multiple Languages Including Spanish & Bulgarian• CALL TODAY ... YOU'LL BE GLAD YOU DID! <p> @HoosRealEstateGroup 847.732.3776</p> <p><i>Please Ask About First Time Home Buyer Money</i></p>



For ad info. call 1-800-950-9952 • www.4lpi.com

Village of Wheeling, IL

C 4C 01-1335