



# THE WHEELING CIRCULAR

*Revolving Around  
Community*

November/December 2021

THE VILLAGE PRESIDENT AND BOARD OF TRUSTEES INVITE YOU TO  
USHER IN THE HOLIDAY SEASON WITH

*Lights Around  
Wheeling*



FESTIVITIES BEGIN AT 4:30PM ON SUNDAY, NOVEMBER 21<sup>ST</sup>  
AT FRIENDSHIP PARK (NORTHEAST CORNER OF DUNDEE & MILWAUKEE)

WWW.WHEELINGIL.GOV

# WELCOME TO WHEELING



*President  
Patrick Horcher*

## From the Desk of President Horcher

The Rock 'n' Run the Runway event usually falls near Independence Day, but thanks to this year's many pandemic-related adjustments, it became an end-of-summer celebration instead. We're grateful as always to our partners at Chicago Executive Airport and the City of Prospect Heights, to the Village's dedicated staff for all their hard work and careful planning to make the event a success, and to everyone who came out on August 21 to enjoy the music and fireworks with us.

And there are more community celebrations to enjoy before the year is out. Lights Around Wheeling, the Village's holiday lighting ceremony, returns on Sunday, November 21, and will take place at 4:30 p.m. in Friendship Park, the northeast corner of Milwaukee and Dundee. As in past years, the event will feature a procession, visits with Santa, and the lighting of the holiday lights. We hope you'll be able to join us. The Village also plans to assist Mr. Claus in reaching all Wheeling residents by repeating the socially-distanced Santa on Your Street neighborhood visits this year. Keep an eye on our social media for additional details!

On a less festive but still satisfying note, cooler weather also means the end of road construction season. The Village's major 2021 projects have now wrapped up—including street improvements in the Dunhurst, Kingsport, and Longtree subdivisions, and in the industrial area between Northgate Parkway and the railroad tracks—and we appreciate the patience of our residents and business while this work was in process. As everyone surely knows, a couple of major regional road projects have also been underway in Wheeling. One of these, the Cook County Highway Department's reconstruction of Lake Cook Road, will soon be substantially complete, with only restoration and landscaping left to do in the spring. Another, the Illinois Department of Transportation's reconstruction of Wolf Road, recently began its second phase, which has allowed the resumption of two-way traffic on Wolf and the reopening of all lanes on Dundee.

It's been a busy construction season off the roadways, too. Last month I and other Village representatives attended a ribbon-cutting for the new U.S. Customs facility at Chicago Executive Airport, which will help the airport serve its growing number of international flyers. We also attended the groundbreaking of the Shops on Rows Edge, a 10,000-square-foot retail building under construction on the last remaining building pad by the Westin hotel. Although much about the global economy remains uncertain, projects like these indicate strong optimism about Wheeling's future, an optimism that's also reflected by recent activity in the industrial sector—including FedEx's pending occupancy of Panattoni's 160,000-square-foot speculative development—and by the opening of new businesses, including two new restaurants: Chinese Munch In in Wolf Point Plaza and Meat & Potato Urban Kitchen in the Wheeling Town Center.

In the weeks and months to come we expect to have more updates regarding other notable projects that are currently in the works. For now, on behalf of the Board of Trustees and all Village officials and staff, I'd like to offer you best wishes for a happy holiday season and a healthy and prosperous 2022!

*The Village Board and staff wish you  
and your family a safe and happy holiday season!*



*Members of the Wheeling Village Board, Prospect Heights City Council, Chicago Executive Airport Board of Directors, and other local leaders cut the ribbon on a new U.S. Customs and Border Protection facility located at Chicago Executive Airport.*

# WELCOME TO WHEELING

## Welcome New Businesses!

<b>Aid for Women</b> 111-115 N. Wolf Road Pre- and post-natal care clinic 312.621.1107	<b>JHK General Contractor</b> 540 Allendale Drive, #217 Roofing contractor 224.313.5917
<b>American Energy Technologies Co.</b> 265 Alice Street Battery product manufacturing 847.481.0751	<b>JKW Machinery &amp; Mfg Inc.</b> 500 Harvest Court, Unit 8 Small machine shop 224.676.0184
<b>AP Stretching Studio</b> 970 Seton Court Children's rhythmic gymnastics 224.423.4911	<b>Meat &amp; Potato Urban Kitchen</b> 403 W. Dundee Road Sit-down restaurant 847.243.8930
<b>Chicago Fade Lounge</b> 850 Wheeling Road Barber shop 847.243.8167	<b>Sunstyle</b> 250 Alice Street Solar roofing panel retailer 202.744.9727
<b>Chinese Munch In</b> 1960 S. Wolf Road Chinese food restaurant 847.229.1818	<b>Wheeling COVID Testing Center</b> 747 W. Dundee Road Temporary testing center 872.235.8723
<b>Illinois Garage Door Repair</b> 600 Northgate Pkwy, Unit A Garage door repair/installation 847.682.6188	

## Health Happenings

### Wheeling Community Virtual Blood Drive

The pandemic has resulted in heavy impacts to mobile blood drive operations and thousands of blood drive cancellations. Because of this, blood banks are in critical need of donors. From November 1 through November 30, the Village of Wheeling is partnering with Vitalant to host a Virtual Blood Drive. Participants can go to any Vitalant storefront and donate blood during the month. Visit [www.vitalant.org](http://www.vitalant.org) and use group code WH98 to register. For more information contact Health Officer Serena Ivaldi at [sivaldi@wheelingil.gov](mailto:sivaldi@wheelingil.gov). Every drop counts!



### WHEELING WALKS: Walk Your Way to Fitness

According to the Mayo Clinic, physical activity doesn't need to be complicated. Something as simple as a daily brisk walk can help you live a healthier life.

The Board of Health, in cooperation with the Wheeling Park District, would like to help you form the healthy habit of walking regularly. Join us for Wheeling Walks—our community walking club—every Saturday at 9:30 a.m. Meet at the Heritage Park Performance Pavilion to walk the path around beautiful Lake Heritage. Everyone is welcome to participate, including four-legged walkers.

In case of inclement weather, Wheeling Walks participants can opt to use the walking track on the second floor of the Community Recreation Center.

Wheeling Walks is a free, year-round program. No registration is required.

## Assist Homebuyer Program

The Village of Wheeling now offers a two-pronged approach to assist homebuyers. The Assist program provides families with funds to pay all or most of their closing costs and down payment, and the mortgage credit certificate (MCC) program reduces the homebuyer's ongoing cost of borrowing.

### What is Assist?

Assist is a program that offers individuals and families with 30-year fixed-rate mortgages and offers 3-7% cash assistance on the amount borrowed on a mortgage to qualified homebuyers. The cash assistance may be used to offset some or all of the home loan's down payment and closing costs. Assist minimizes the amount of money you need on hand to purchase your home.

### What are Mortgage Credit Certificates?

MCCs are a federally authorized program created as an alternative to tax-exempt housing bonds to reduce effective interest costs for qualifying homebuyers. MCCs allow the homebuyer to qualify for a federal income tax credit equal to a percentage of the interest paid on their home loan each year. MCC holders still qualify for a regular deduction of the remaining interest paid on their home loan.



To find out more about the program, contact Angela Conover at 312.664.5656 or [angelaconover@earthlink.net](mailto:angelaconover@earthlink.net).

# POLICE & FIRE DEPARTMENTS

CodeRED

**TEXT "WHEELING"**  
to 99411 to enroll in  
Village of Wheeling's  
emergency alerts program

**STAY INFORMED AND  
AWARE REGARDING:**

Missing children or missing persons  
Criminal activity  
Fires  
Drinking water contamination  
Various threats to people, property  
or the environment

<https://www.wheelingil.gov/> | (847) 459-2600



## Change your batteries, save your family

On **Sunday, November 7**, we will once again move our clocks backwards as Daylight Saving Time comes to an end for the year. It is also an excellent reminder to once again change the batteries in your smoke and carbon monoxide detectors. These are the hardest-working appliances in your home, protecting your family every second of every day. Make sure they work by changing their batteries (if applicable), vacuuming them, and testing them. If your smoke detectors are more than ten years old, or you are not sure how old they are, replace them with a newer sealed ten-year device. If your carbon monoxide detectors are more than five years old, or you are not sure how old they are, replace them with a newer sealed ten-year device or a newer combination smoke detector/carbon monoxide detector device. All of the newer devices have sealed batteries and no longer require annual replacement; after ten years of use, you just dispose of them. A few minutes of your time now can mean the difference between life and death should a fire occur in your home later on.



## Burning Landscape Waste is Illegal in Wheeling

The burning of construction debris, garbage, paper, and landscape waste including leaves, twigs, and damaged tree limbs is not only environmentally unhealthy and prone to causing accidental fires, it is also illegal in Wheeling. Violators are subject to citations and fines. Please use the weekly landscape waste collection program outlined on page 9 to dispose of landscape debris.

### Outdoor Fireplace Regulations

- Only dry, well-seasoned natural wood logs may be burned in an approved outdoor fireplace.
- Use in accordance with the manufacturer's operating instructions.
- Keep all portable fireplaces a minimum of 15 feet from combustible structures, playground equipment, and nearby vehicles.
- Never use gasoline to start an outdoor fireplace.
- A responsible adult must remain nearby with a fire extinguisher, a bucket of water, or an attached garden hose in case the fire accidentally grows too large or embers ignite anything outside of the fireplace.
- Remember to be a good neighbor when using an outdoor fireplace. Please be respectful and cooperative with your neighbors by extinguishing your outdoor fireplace if it adversely impacts your neighbor's health and well-being.

# HUMAN SERVICES DEPARTMENT

## Holiday Donations Needed

At times throughout the year, the Village of Wheeling Human Services Department provides economic support to families in need. This support is in the form of gift cards to local stores such as Walmart, Aldi, Walgreens, CVS, etc. The Human Services Department receives these cards as donations from civic groups and generous residents. These cards are used when residents have difficulties making ends meet during a crisis. Residents continue to struggle dealing with the pandemic and the economic downturn, and our supply of gift cards has been severely impacted by the community need. If you are in a position to make a donation of a gift card to support another Wheeling resident, please consider giving this year. If you know someone in the Village that is in need of resources during this trying time, please refer them to our department. Please call 847.459.2606. Social workers are available Monday–Friday 9 a.m.–5 p.m.



## Medicare Open Enrollment

Every year, Medicare's open enrollment period is October 15 – December 7. Medicare health and drug plans can make changes each year to cost, coverage, and what providers and pharmacies are in their networks. October 15 to December 7 is when all people with Medicare can change their health plans and prescription drug coverage for the following year to better meet their needs.

People in a Medicare health or prescription drug plan should review the materials their plans send them, like the Evidence of Coverage (EOC) and Annual Notice of Change (ANOC). If their plans are changing, they should make sure their plans will still meet their needs for the following year. If they're satisfied that their current plan will meet their needs and it's still being offered, they don't need to do anything.

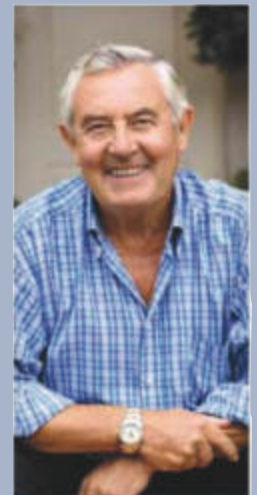
New plan information can be obtained by visiting [www.medicare.gov](http://www.medicare.gov), or by calling 1.800.MEDICARE or the Village of Wheeling Senior Services Division at 847.459.2670. Call for an appointment to find the best prescription drug plan for your individual needs for 2021. Appointments are available during open enrollment on Tuesdays and Thursdays.



"I found a better deal on prescriptions."



"We found lower co-pays."



"I found a plan that works better for me."

### WHAT WILL YOU FIND DURING MEDICARE OPEN ENROLLMENT?

Medicare Open Enrollment  
Oct. 15 - Dec. 7

[WWW.MEDICARE.GOV](http://WWW.MEDICARE.GOV)  
1-800-MEDICARE



## FREE LUNCH

The eligibility guidelines are as follows:

- A person must be 60 years old of age or older.
- Call us to make your reservation (847) 459-2606.
- Coupon redeemable for new participants only, and one coupon per person.
- Dine in only. Present this coupon at the time you visit us for your free lunch.

### Village of Wheeling Lunch at the Center

Wheeling Park District Community Recreation Center

Call to make a reservation, 847-459-2606

Regular suggested donation for meal is \$5.00

## Lunch @ The Center

Nutritionally-balanced meals and socialization for older adults 60+. Meals are served Monday through Friday from 11:30 a.m. to 12:30 p.m. at the Wheeling Park District Community Recreation Center. You may dine in using COVID protocols or you may pick up meals between 9:30 a.m. and 10:30 a.m. The suggested donation/contribution is \$5 per meal.

No one will be denied services for inability to pay. Contact Dining Coordinator Jesus Delgado at 847.650.0650 to register or with questions.

# WE'RE HIRING

AD SALES EXECUTIVES

**BE YOURSELF. BRING YOUR PASSION.  
WORK WITH PURPOSE.**

- Paid Training
- Some Travel
- Work-Life Balance
- Full-Time with Benefits
- Serve Your Community



Contact us at [careers@4lpi.com](mailto:careers@4lpi.com)  
[www.4lpi.com/careers](http://www.4lpi.com/careers)

AVAILABLE FOR A LIMITED TIME!

**ADVERTISE HERE NOW!**

Contact **Dan Morrissey** to place an ad today!  
[dmorrissey@lpicommunities.com](mailto:dmorrissey@lpicommunities.com)  
or (800) 950-9952 x5862

♥ Sugarie Bakerie ♥



Love ♥ Cookies ♥ Charity

*Satisfy your Sweet Tooth while helping to pay it forward.*

A percentage of sales goes to help others. Visit us at [www.sugariebakerie.com](http://www.sugariebakerie.com)

6 Free "Halloween" Cookies with your online order

## FREE AD DESIGN

WITH PURCHASE OF THIS SPACE



CALL 800.950.9952

# NEVER MISS A NEWSLETTER!

Sign up to have our newsletter emailed to you at [www.mycommunityonline.com](http://www.mycommunityonline.com)



*Cheapest Laundry machines in Town!*



**Lucky Star  
Laundromat**

49 N. Wolf Rd. (Just N. of Dundee Rd.)  
Wheeling, IL  
Rt. Next to Joe's Pizza

**ADT-Monitored  
Home Security**

Get 24-Hour Protection  
From a Name You Can Trust

- Burglary
- Fire Safety
- Flood Detection
- Carbon Monoxide



Authorized  
Provider

SafeStreets

1-855-225-4251



For ad info. call 1-800-950-9952 • [www.lpiseniors.com](http://www.lpiseniors.com)

Village of Wheeling, IL

A 4C 01-1335

# SUPPORT OUR ADVERTISERS!



**AVAILABLE FOR  
A LIMITED TIME!**

**ADVERTISE HERE NOW!**

Contact **Dan Morrissey**  
to place an ad today!

[dmorrissey@lpicommunities.com](mailto:dmorrissey@lpicommunities.com)

or **(800) 950-9952 x5862**

**FREE AD DESIGN**

WITH PURCHASE OF THIS SPACE

**CALL 800.950.9952**

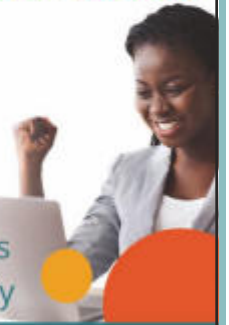


**WE'RE HIRING**

AD SALES EXECUTIVES

**BE YOURSELF. BRING YOUR PASSION.  
WORK WITH PURPOSE.**

- Paid Training
- Some Travel
- Work-Life Balance
- Full-Time with Benefits
- Serve Your Community



Contact us at [careers@4lpi.com](mailto:careers@4lpi.com)  
[www.4lpi.com/careers](http://www.4lpi.com/careers)



Space available  
3000 sq ft - 1750 sq ft • 7300 sq. ft.  
May divide. Call with Size Requirements

**Tenant Roster**

- Boost Mobile
- Carniceria Jimenez
- Concentra Medical, P.T/O.T.
- Fabulous Hair Salon
- Familia Dental
- Five Star Nails
- Little Caesars Pizza
- Mark Drug & Medical Supply
- Northwest Insurance Network
- SalonCentric
- Stella's
- 1900's Barber Parlor
- Wingstop coming soon

- Across the street from 1000 new apartments
- Across the street from the New Town Center
- Anchored by Carniceria Jimenez with 37,100 sq. ft.
- Across from Metra Station
- Daily traffic count of 70,000 cars
- Market includes Buffalo Grove, Northbrook, Prospect Heights & Arlington Heights
- Parking for over 400 cars
- Easy access from Rt. 53, 1-94 & I-294
- Excellent retail visibility

**Demographics**

	1 Mile	3 Miles	5 Miles
Average Income	\$85,088	\$107,330	\$116,180
Population	17,382	103,722	274,540

A \$5,000 donation will be given to the Leukemia Research Foundation for each store leased through this ad.



Not affiliated with Hallmark & Johnson Properties, Lincolnwood

For information call:  
Mike or Jeff Kolodny 773-777-6160



Love & Respect,  
Dream Building Too  
Safe, Cheerful, Warm  
Our Promise to You  
Serving the Wheeling Community Since 1983  
Family Owned since 1965  
Ages 6 weeks - 12 Years  
6:30 a.m. until 6:00 p.m.  
404 S. Elmhurst Rd • Wheeling IL 60090  
847-520-4466 • [www.pokolokochildcare.com](http://www.pokolokochildcare.com)

Family Owned Since 1966

**JOE'S PIZZERIA**  
Wheeling  
847-537-1477

Visit our web site for a full menu  
J&J Video Gaming  
[www.joespizzaUSA.com](http://www.joespizzaUSA.com)

Ranked 2nd with Hungry Hound

**10% OFF** coupon for your order today  
expiration 12/31/2021



For ad info. call 1-800-950-9952 • [www.lpiseniors.com](http://www.lpiseniors.com)

Village of Wheeling, IL

B 4C 01-1335

# COMMUNITY DEVELOPMENT & PUBLIC WORKS

## Snow Season Procedures

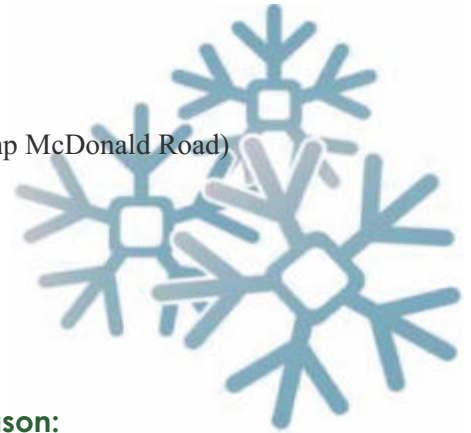
Public Works snow and ice responsibilities include roadway de-icing and clearing arterial, collector, and residential roadways, certain sections of public sidewalks, the train station, and Village-owned buildings and properties. Public Works is not responsible for the maintenance of or snow control on county- or state-owned roadways or rights-of-way. These roadways include:

### Illinois Department of Transportation (IDOT) 847-705-4222

- Dundee Road (Route 68)
- Milwaukee Avenue (Route 21)
- Palatine Road including East and West Palatine frontage
- Wolf Road (Manchester North to Milwaukee Avenue; South of Marquardt to Camp McDonald Road)
- Elmhurst Road (Route 83)
- McHenry Road (Route 83)

### Cook County Highway Department 847-827-1164

- Lake-Cook Road
- Hintz Road
- Buffalo Grove Road
- Aptakisic Road
- Schoenbeck Road
- Camp McDonald Road
- Old Buffalo Grove Road



### Residents are advised of the following safety tips during the snow season:

- Stay 100 feet or more behind a snowplow or salt truck.
- When it is safe, shovel snow away from fire hydrants near your property for emergency access.
- Do not place refuse, refuse containers, or any other items in the street.

### Vehicle Parking Restrictions

- Do not park on any Village street within eight hours after a snowfall of two inches or more to allow safe and efficient snow and ice control by Public Works.
- Vehicles in violation of this restriction may be towed by the Police Department.
- For additional information, contact the Wheeling Police Department at 847.459.2632.

### Sidewalk Requirements

- Residents and property owners are responsible for clearing snow and ice from sidewalks adjoining or adjacent to their property by 10 a.m. the day after a snowfall. Property owners are permitted to spread sand, salt, or other substances made for the purpose of melting snow and ice on sidewalks.
- Residents and property owners shall not deposit snow or ice onto any roadway within the Village; instead, deposit snow and ice onto the parkway.

For additional information, contact Community Development at 847.459.2620.

## Protect Water Lines from Freezing

Follow these measures to protect water lines from freezing and prevent water pipes from rupturing during extreme cold:

- Monitor water meters:** Wrap water meters with foam insulation or heat tape if located in unheated or colder areas such as crawlspaces. Periodically check your meter and associated piping for cracks or leaks and ensure proper marking and operation of the shut-off valve in case a pipe bursts.
- Eliminate drafts:** All crawlspace and basement vents, windows, and doors should be repaired and closed, making sure a tight seal exists to keep out cold air.
- Insulate pipes:** Insulating pipes in colder or unheated areas such as the crawlspace, or pipes located adjacent to an outside wall, helps to reduce the possibility of ruptured pipes. Allow warm air to circulate around pipes accessible by cabinets and located against outside walls.
- Leave faucets running:** Keeping a continuous trickle of cold water running can help reduce the possibility of a pipe bursting due to freezing.

If you know that a property has been unoccupied for several days, contact the Public Works Utility Division at 847.279.6900 so they can verify if water services are shut off at the property. This can prevent costly damage to the unoccupied property.

## Home Winter Safety Measures

### Service the Furnace

Before the cold autumn and winter weather sets in, be sure to contact a heating and cooling company to service your furnace. A specialist should inspect the furnace to make sure everything is in working order and that there are no leaks.

### Using Your Fireplace Safely

Keep fire in its proper place by using a fireplace screen to prevent sparks from flying out of the fireplace. Never leave a burning fire unattended, and make sure the fire is completely extinguished before retiring for the night or leaving your home.

### Caution with Space Heaters

A space heater can be an effective way to warm up a chilly room, but it's essential to read the instructions on the unit before use. If your space heater requires venting, make sure you have vented it to the outdoors. Never use your stove or oven to heat your home; only use space heaters that are approved. Always allow at least three feet of empty area around space heaters.

### Rodenticides and Cold Weather Poisons

The use of rat and mouse poisons increases during cold weather months as rodents seek shelter from the temperatures by attempting to move indoors. Rodenticides are highly toxic to pets; if ingested, the results could be fatal. If you must use these products, please use extreme caution and place them in areas that are inaccessible to your pets.

**The Village encourages residents to help remove debris from storm sewer inlets.**



## Storm Drain Grate/Inlet Cleaning

Storm drain grates/inlets are normally located near the edge of streets or in rear yards, collecting water which uses the storm sewer system to ultimately flow into streams, rivers, or lakes. Grates/inlets obstructed with leaves and other debris can deny constant water flow and cause localized flooding. As snow melt occurs in spring, the Village encourages residents to safely clear storm sewer grates/inlets near their property to avoid local flooding issues. If a grate/inlet is obstructed, rake the debris off of the structure and onto the parkway or into a waste container. If ponding or another concern arises, contact Public Works 847.279.6900.

## Yard Waste and Leaf Disposal

With the arrival of the autumn season, the Department of Public Works reminds residents that depositing leaves onto any roadway is prohibited. Leaves deposited onto roadways have an immediate and negative effect on the storm sewer system, including clogged storm sewer drains/inlets and subsequent flooding.

The Village's contract with Waste Management provides a convenient method to dispose of leaves and other yard waste for residents who have curbside pick-up service:

- Residents can use 2-ply Kraft biodegradable 32-gallon yard waste bags or rigid plastic 32-gallon containers clearly marked with a red "X". These containers and biodegradable bags may not exceed 50 pounds when filled with waste, and there is no limit on the number of yard waste bags or containers to be collected. Please note that yard waste placed in plastic bags or cardboard boxes will not be collected.

- Brush and tree branches must be bundled and bound with biodegradable string. Bundles must be no more than four feet in length, no more than two feet in diameter, and weigh no more than 50 pounds. In addition, the individual tree branches that are bundled must also measure less than three inches in diameter.

Residents are reminded that curbside yard waste collections conclude on November 30, 2021. Collections will resume April 1, 2022. It is illegal in the State of Illinois to mix yard waste in household garbage or recycling carts; carts containing yard waste will not be serviced.

# COMMUNITY NEWS & EVENTS

## Applying for a Building Permit

The Village of Wheeling is OPEN to the public and we welcome you in. Wheeling and its staff are committed to your continued safety, and follow the guidance from the State of Illinois. If you prefer to not enter Village Hall, or need to conduct business outside regular hours of operation, we have other options for you. For your convenience, you can utilize the 24-hour drop box located on the west side of the building (next to the utility bill payment drop box) or you may also email building permit submittals to [CDinfo@wheelingil.gov](mailto:CDinfo@wheelingil.gov). Contact the Community Development Department at 847.459.2620 if you have any questions.



How do I apply for a permit?\*

- Complete a Permit Application, available at: [www.wheelingil.gov/519/Forms-Permits](http://www.wheelingil.gov/519/Forms-Permits)
- Provide a plat of survey – two copies showing location of work
- Provide building plans – four sets of architectural drawings
- Attach two copies of proposal or contract
- Attach two sets of specification cut sheets

When using our drop box, place permit submittal in a sealed envelope.

*\*Other documents may be required depending on the scope of your project.*

## VOLUNTEERS WANTED!

Part-time rewarding experience with flexible hours!

Lunch at the Center Senior Congregate Dining Program needs volunteers to serve lunch Mondays – Fridays from 10 a.m. – 2 p.m.

This is an excellent opportunity to meet new friends, be part of a great team, and have some fun. No experience required.

Please call Senior Services at 847.459.2670 for more information.

## Holiday Solid Waste Collection Reminder

In observance of Thanksgiving Day, November 25, 2021, solid waste collections will be delayed by one day.

WASTE MANAGEMENT

## Holiday Tree Collections

Non-artificial holiday trees are collected at residential curbsides by Waste Management during the first two weeks in January at no additional charge. Trees that have decorations or are in stands or plastic bags will not be collected.

## Holiday Lights Recycling

Residents may recycle holiday lights—including mini, C7, C9, rope, and LED lights, as well as extension cords of all colors and lengths—at the Department of Public Works, 77 W. Hintz Road, November 1, 2021 to January 31, 2022, Monday through Friday from 7 a.m. to 3 p.m. Garland, live greens, wreaths, and other non-recyclables are not accepted in this recycling program. Call 847.279.6900 with any questions.

Village of Wheeling offices will be closed:  
Thursday, November 25  
and Friday, November 26  
for Thanksgiving  
&  
Friday, December 24  
for Christmas.

# WE ARE HERE TO SERVE YOU!

## Village Manager

Jon A. Sfondilis  
jsfondilis@wheelingil.gov

## Fire Department

499 S. Milwaukee Avenue  
847.459.2662 (non-emergency)

- Fire codes
- CPR classes

## Police Department

1 Community Blvd.  
847.459.2632 (non-emergency)

- Citizens Police Academy
- Graffiti removal
- Neighborhood watch

## Human Services

847.459.2606

- Social Services
- Community Assisted Relief Efforts

## Public Works Department

77 W. Hintz Road

847.279.6900, 7 a.m. to 3:30 p.m. M - F

- Fire hydrant flushing
- Street/pothole repairs
- Streetlight maintenance
- Snow plowing
- Forestry & landscape
- Sanitary sewer service televising
- Water quality concerns
- Flooding
- Capital Improvements Division
- Cable TV
- Waste Management

## Senior Programs

Wheeling Park District  
100 Community Boulevard  
847.459.2670

## 847.459.CODE

to report code violations

## Village Hall Offices

2 Community Boulevard  
www.wheelingil.gov  
Phone: 847.459.2600  
Fax: 847.459.9692  
Open 8 a.m. to 5 p.m. M - F

## Administration

847.499.9082

- Village Manager's office
- Liquor licenses
- Voter registration
- Employment opportunities
- Freedom of Information requests,  
foia@wheelingil.gov
- Photo submissions, fb@wheelingil.gov

## Finance Department

847.459.2627

- Water bills
- Real estate transfer stamps
- Metra parking passes
- Pet licenses

## Community Development

847.459.2620

- Building, engineering, sign permits
- Business & rental property licenses
- Building codes & zoning information
- Property maintenance
- Flood maps & zone determination
- Health Division
- Planning Division

## Economic Development

847.459.2605

- Available buildings
- Demographics
- Development inquiries
- TIF district information
- 6b tax exemption applications

## Fire Prevention Bureau

847.459.2669

- Fire alarm & sprinkler permits
- Inspections

## Village Board

Village President Pat Horcher  
847.499.9095  
phorcher@wheelingil.gov

Clerk Kathryn Brady  
847.499.9231  
kbrady@wheelingil.gov

## Trustees

**Mary Krueger:** 847.499.9232  
mkrueger@wheelingil.gov

**Ray Lang:** 847.499.9236  
rlang@wheelingil.gov

**Mary Papantos:** 847.499.9235  
mpapantos@wheelingil.gov

**Jim Ruffatto:** 847.499.9233  
jruffatto@wheelingil.gov

**Joe Vito:** 847.499.9234  
jvito@wheelingil.gov

**Dave Vogel:** 847.499.9237  
dvogel@wheelingil.gov

## Outside Agencies

### Wheeling Park District

100 Community Boulevard  
847.465.3333

### Indian Trails Public Library

355 Schoenbeck Road  
847.459.4100

### Chicago Executive Airport

847.537.2580

**Noise Hotline:** 847.537.2580 x 117

### Chamber of Commerce

2 Community Blvd., Suite 203  
847.541.0170

### Wheeling Township

1616 N. Arlington Hts. Rd.  
847.259.7730

www.wheelingtowship.com

- Tax Assessor's office
- Senior & disability services
- Public aid



Mary C.  
Krueger



Ray  
Lang



Mary M.  
Papanos



Jim  
Ruffatto



Joe  
Vito



Dave  
Vogel



Kathryn M.  
Brady



Jon A.  
Sfondilis

PRSR-T-STD  
US POSTAGE  
PAID  
PERMIT NO. 053  
WHEELING, IL

\*\*\*ECRWSS\*\*\*

CARRIER ROUTE PRE-SORT

Local Postal Patron  
Wheeling, IL 60090

<p><b>FREE AD DESIGN</b> WITH PURCHASE OF THIS SPACE</p> <p><b>CALL 800.950.9952</b></p>		<p><b>WE'RE HIRING</b> AD SALES EXECUTIVES</p> <p><b>BE YOURSELF. BRING YOUR PASSION. WORK WITH PURPOSE.</b></p> <ul style="list-style-type: none"><li>• Work-Life Balance</li><li>• Paid Training</li><li>• Full-Time with Benefits</li><li>• Some Travel</li><li>• Serve Your Community</li></ul> <p>Contact us at <a href="mailto:careers@4lpi.com">careers@4lpi.com</a> <a href="http://www.4lpi.com/careers">www.4lpi.com/careers</a></p>
<p><b>B&amp;W</b> BUSINESS &amp; WEALTH</p> <p><b>THE MARKET IS MOVING</b></p> <p>If you're ready, I can help!</p> <p><b>Your Personalized Marketing Plan Includes:</b></p> <ul style="list-style-type: none"><li>• Professional Photographs • 2 Hour Staging Consultation</li><li>• Customized Marketing Materials • Social Media Exposure</li><li>...&amp; SO MUCH MORE</li></ul> <p>Contact Me Today for your FREE Marketing Plan!</p> <p><b>LIZ TREVINO MARTINEZ</b> <b>847 / 373-1594</b> 5 Star REALTOR</p>	<p>Top 1% of Sales in Coldwell Bankers Worldwide Network</p> <p><b>Connie Hoos</b> (847)732-3776</p> <p><b>Hoos RESIDENTIAL TEAM</b></p> <p>Selling Wheeling Since 1977</p> <p>Free Consultation</p> <p>mówimy po polsku</p> <p>Se Habla Español</p> <p>YOU DESERVE THE BEST IN REAL ESTATE SERVICE WE ARE HERE TO PROVIDE IT!</p> <p><b>GS*</b> f g i @HoosRealEstateTeam ConnieHoos.com</p>	



For ad info. call 1-800-950-9952 • [www.lpiseniors.com](http://www.lpiseniors.com)

Village of Wheeling, IL

C 4C 01-1335