



# THE WHEELING CIRCULAR

*Revolving Around Community*

May/June 2022

## WHEEL-INN BODY & MOTOR WORKS, INC.



# ROCK \* N \* RUN

## ★ THE RUNWAY ★

AT CHICAGO EXECUTIVE AIRPORT

# JUNE 25<sup>TH</sup> 2022

6-25-22



CONTRIBUTIONS BY  
**KLEIN, THORPE, & JENKINS, OZINGA,  
WASTE MANAGEMENT, WHEELING PARK DISTRICT,  
DTK STONE WORKS**

**FOOD TRUCKS! ★ BALLOON ARTISTS! ★ FACE PAINTERS! ★ LIVE MUSIC!**

**ENJOY GOURMET FOOD TRUCKS AND A WIDE VARIETY OF BEER AND WINE!**

Event Schedule:

### RUN THE RUNWAY

8:00 am: Race begins

### ROCK THE RUNWAY

5:00 pm: Gates open

6:00-7:30pm: Live music by Gone Country

8:15-10:30pm: Live music by Mike & Joe  
Mike & Joe will break at 9:15 for fireworks

## Mike & Joe



FOR RACE, PARKING, AND EVENT INFO VISIT:  
[WWW.ROCKNRUNRATHERUNWAY.COM](http://WWW.ROCKNRUNRATHERUNWAY.COM)

NO OUTSIDE FOOD OR BEVERAGES



# WELCOME TO WHEELING



*President  
Patrick Horcher*

## From the Desk of President Horcher

Springtime is easing back into Wheeling, and many of us are eager to spend time in the open air—this year more for our enjoyment than our safety, fortunately. It's a great time to renew your acquaintance with sidewalks, front yards, and bike paths, to spend time in the Wheeling Park District's great facilities and in the Cook County Forest Preserves, to meet friends and family at your favorite eating and drinking establishments, and to gather with neighbors in community celebrations, including the Rock 'n' Run the Runway event on June 25, featured on the cover of this newsletter.

For many of us it's also a productive time; the Village has certainly been busy lately. In March we demolished the former Collins Fireplace building on Dundee Road, a property that the Village acquired in 2007 and had been using for storage. The demolition brings us closer to the vision set forth in our Strategic Plan of replacing industrial sites around the Metra station with transit-oriented residential and retail, a goal that we've largely accomplished east of the tracks and soon hope to achieve to the west. The Village Board also recently took action to proceed with construction of a new Fire Station 42 next to the water tower on McHenry Road, just north of Buffalo Creek. Station 42 currently operates out of the facility it shares with the Police Department at 1 Community Boulevard, and building this new facility will further improve our ability to provide fast and effective emergency services west of the tracks.

The Illinois Department of Transportation's contractor has also gotten back to work on the reconstruction of Wolf Road, which will eventually result in an improved and widened roadway. This project requires the temporary closure of some connecting streets, so please visit our website ([wheelingil.gov](http://wheelingil.gov)) for updates. There's progress to report in the retail sector, too: in recent weeks we've celebrated both the opening of Crumbl Cookies at 1530 E. Lake Cook Road and the reopening of the remodeled Walmart at 1455 E. Lake Cook Road, two businesses that invested a combined \$650,000 in their sites.

To further invigorate Wheeling as a shopping and dining destination, our consultant team continues their work on the Restaurant Row Corridor Plan. Based on public input and a series of in-depth analyses, the team will make recommendations to enhance the Milwaukee Avenue streetscape, suggest ways to maximize the benefits of recreational opportunities along the Des Plaines River, and identify uses that complement the existing businesses and neighborhoods. We're grateful to the residents and businesses who have participated in the study by attending a community workshop or filling out a survey, and there are still upcoming chances to add your voice to the discussion. You can learn more by visiting the project website at [www.wheelingrestaurantrowplan.com](http://www.wheelingrestaurantrowplan.com).

And of course that's not the only way you can help shape the future of Wheeling. The Village currently has openings on some of its commissions, and on behalf of the Village Board I strongly encourage you to volunteer your time, enthusiasm, and good judgment for the community's benefit. The commissions—which include the Plan Commission and the Board of Health, among others—make policy recommendations and play important practical roles in the Village's operations; while we value some professional expertise in the commission's area of focus, it isn't required. To learn more, visit the Village's website or contact the Village Clerk's office at 847.499.9085.

I mentioned Rock 'n' Run the Runway above, and the Village is definitely excited to work with our partners at Chicago Executive Airport and the City of Prospect Heights to present this much-anticipated community celebration. This year, however, our excitement is tempered with a note of sadness, in that we'll be missing one of the most prominent participants from prior years. On behalf of the Wheeling community, I offer condolences to our neighbors in Prospect Heights on the recent passing of Mayor Nicholas J. Helmer. Wheeling's ties with Prospect Heights are unusually close given our co-ownership of Chicago Executive Airport, and we at the Village always admired Nick's charming and energetic advocacy on behalf of the community he served. He will be greatly missed.

2 We hope to see you at Rock 'n' Run the Runway and elsewhere in town, and hope this newsletter finds you enjoying a safe and happy spring!



*President Horcher was joined by State Senators Morrison and Johnson and members of the Wheeling Village Board and Plan Commission at a ribbon-cutting for Crumbl Cookies.*

# WELCOME TO WHEELING

## Welcome New Businesses!

**ACK Group, LLC**  
201 E. Strong, Ste. 7  
COVID-19 screening  
773.654.3850

**Kopa Bubble Tea**  
37 Huntington Lane  
Tea bar  
773.430.3743

**Castro Construction & Design Inc.**  
482 N. Milwaukee Ave., Ste 4  
Residential construction  
224.676.1454

**Pacocha Landscape Service Inc.**  
187 Wheeling Road  
Landscape services  
847.699.0116

**Comfort Arrows**  
787 Glenn Avenue  
HVAC repair  
847.279.4979

**Pixie Dust Studio LLC**  
99 N. Wolf Road  
Make-up studio  
224.280.6115

**Crumbl Cookies**  
1530 E. Lake Cook Road  
Fresh-baked gourmet cookies  
224.279.0548

**Smoke It, Inc.**  
48 W. Dundee Road  
Nicotine product retailer  
847.208.4441

**Heartland Animal Shelter**  
586 Palwaukee Drive  
Animal shelter  
847.296.6400

**Striver Inc.**  
391 E. Dundee Road  
Nutrition consultants  
708.787.4837

**JBS Club**  
43 W. Hintz Road  
Beauty supply retail outlet  
847.600.3030

**Vortex Diamond, Inc.**  
2300 Foster Avenue  
Online power tool retailer  
847.780.6092

**Joyce Lee**  
482 N. Milwaukee Ave.,  
#3A  
Health insurance broker  
224.308.6678

**Win Media**  
1038 S. Milwaukee Avenue  
Korean media corporation  
847.290.8282

## Low-Income Household Water Assistance Program (LIHWAP)

The Village of Wheeling now works in conjunction with the Community and Economic Development Association (CEDA) of Cook County to provide low-income households with water and wastewater bill relief.

### What is LIHWAP?

LIHWAP was established under the Consolidated Appropriations Act of 2021 and the American Rescue Plan Act of 2021. The program goal is to prevent disconnection and restore drinking water and wastewater services to households and reduce arrearages. LIHWAP can only be accessed once per household for up to \$1,500 for reconnection assistance, disconnection prevention, past-due balances over \$250, disconnection fees, and late fees. Water bill payments will be made directly to the Village of Wheeling by CEDA on behalf of approved and eligible Wheeling households.

### Who is eligible for LIHWAP?

Both homeowners and renters can access the program to ease financial stress caused by water bills. To qualify, they must have a household income below 200% of the federal poverty income guidelines, have a past-due balance of at least \$250, or be facing disconnection. The following table summarizes the Gross Income Guidelines for eligible households:

Gross Income Guidelines* 200% Federal Poverty Line	
Family Size	30 Days
1	\$2,147
2	\$2,903
3	\$3,660
4	\$4,417
5	\$5,173
6	\$5,930
7	\$6,590
8	\$6,737

\*Effective Period: July 1, 2021 - June 30, 2022

### When Can Community Members Apply for LIHWAP?

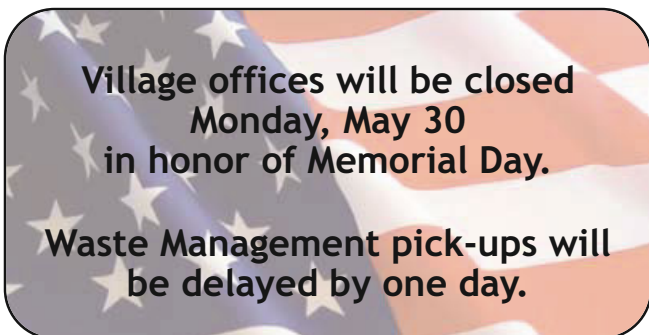
The program is already accepting applications and will run through September 31, 2023, or until funds are exhausted, whichever comes first.

### How Do Community Members Apply for LIHWAP?

Complete a PreApplication online at [cedaorg.net/liheap/pre-app](https://cedaorg.net/liheap/pre-app) or call CEDA's Call Center at (800)571-CEDA to apply over the phone. Residents can also call one of CEDA's 68 Partner Intake Sites to schedule an intake appointment. Visit [cedaorg.net/sites](https://cedaorg.net/sites) for contact information.

### Questions?

Email [waterbilling@wheelingil.gov](mailto:waterbilling@wheelingil.gov) or call 847.459.2607.



# POLICE & FIRE DEPARTMENTS

## Warm Weather Storm Safety

Each year, deadly tornados throughout the Midwest show how unpredictable severe weather can be. Knowing what to do in these situations can minimize the potential for serious injury to you and your family, as well as potential damage to your home or business. The first step in preparing is knowing what the various terms used by the National Weather Service mean.

*If your power is out, please call Commonwealth Edison directly at 800.334.7661*

•**SEVERE THUNDERSTORM WATCH:** Atmospheric conditions are right for the possible development of thunderstorms that may be severe and could produce large amounts of localized rain, as well as hail and high winds. When a “Watch” is issued for our area, monitor the radio, television, and/or internet for further weather updates. Walk around the outside of your home and secure any loose items such as lawn furniture, umbrellas, children’s toys, downspout extensions, etc. to prevent these items from becoming “missiles” if the wind becomes very strong. Avoid leaving your home or business unless absolutely necessary.

•**SEVERE THUNDERSTORM WARNING:** An actual thunderstorm has developed in our area and is producing large amounts of localized rain, hail, and/or high winds. Immediately go inside a building and close all window blinds on the side of the building from which the storm is approaching (this will minimize flying glass, should a window break). To avoid injury in the event of breakage, do not stand in front of or near windows. Do not talk on a hardwired telephone or use plumbing fixtures until the storm passes, since lightning can follow these devices if your home or business is struck.

•**TORNADO WATCH:** Atmospheric conditions are right for the possible development of tornados in our area. It is not uncommon for a “Tornado Watch” to also be associated with a “Severe Thunderstorm Watch.” You should take the same precautions listed above for “Severe Thunderstorm Watch” to prepare for this pending weather condition.

•**TORNADO WARNING:** An actual tornado has been reported by a trained weather spotter and/or has been observed by radar in our area. This is the only event in which the Village of Wheeling’s warning sirens will be activated. Immediately take protective cover in your basement or an interior room (usually a bathroom or closet on the lowest level of your home). If at work, immediately take shelter in an interior room or space on the lowest level of the building (usually a bathroom, closet, interior stairwell, or interior hallway with no windows). Sit with your back against the wall with your head between your knees and your fingers interlaced behind your head. If available, and only if time permits, cover yourself and family members or fellow employees with a blanket or similar item to provide some additional padded protection. If you are caught outside, find the lowest depression in the ground and lie flat on your stomach with your fingers interlaced behind your head and your eyes closed. If you are in your car, do not try to outrun a tornado. Instead, attempt to get inside a nearby structure. If this is not possible, pull your car over to the side of the road, turn on your emergency flashers, and get down on the floor of the vehicle. Most fatalities associated with tornados are caused as a result of individuals being hit by flying debris, particularly broken glass.

After the storm has passed, do not call the Fire or Police Department if your power is out or if there is standing water on your street. If your power is out, please call Commonwealth Edison directly at 800.334.7661. The Village of Wheeling has neither control over when your power will be restored nor any estimates regarding its restoration. Calling the Fire or Police Department for power outages only delays personnel from answering legitimate calls for emergency assistance. Standing water on streets is commonly caused by storm debris sitting on top of the storm sewer grates. Using a long-handled garden tool such as a rake to pull the debris up onto the parkway will clear the sewer grate and allow the water to drain away naturally.

Do not allow children or pets to play outside until you have walked around your home to determine that there are no hazards such as downed power lines, broken glass, or flooded areas. Any downed power lines should be assumed to be energized and immediately reported by calling 9-1-1. Finally, do not allow children or pets to play in flooded stormwater detention basins, since the stormwater can unexpectedly rise or fall, resulting in entrapment or drowning due to being pulled underneath the water.

For more information about warm weather safety, go to:  
<http://www.wheelingil.gov/418/Warm-Weather-Safety-Information>



# HUMAN SERVICES DEPARTMENT

## Social Services Division

The Social Services Division offers many services to residents of the Village of Wheeling who need assistance, including:

**assistance accessing COVID-19 resources • assessment • case management • crisis intervention  
community linkage / information and referral • court advocacy • short-term counseling • tangible and basic needs  
victim services • support groups**

The Social Services Division has professional social workers who work closely with the Police and Fire Departments, schools, and community agencies to serve Wheeling residents. If you need assistance, please contact the Human Services Department Social Services Division at 847.459.2606. Offices are located at 1 Community Boulevard, within the Wheeling Police station. The Social Services Division invites you to take advantage of the many services and great information available.

## Lunch @ The Center

Lunch at the Center provides nutritionally-balanced meals and socialization for older adults 60+. Meals are served Monday through Friday from 11:30 a.m. to 12:30 p.m. at the Wheeling Park District Community Recreation Center. You may dine in using COVID protocols or you may pick up meals between 9:45 a.m. and 10:15 a.m. Please call 847.459.2606 to verify indoor dining, as the situation may change rapidly depending on community COVID transmission levels.

The suggested donation/contribution is \$5 per meal. No one will be denied services for inability to pay. Contact Dining Coordinator Jesus Delgado at 847.650.0650 to register or with questions.



## FREE LUNCH

The eligibility guidelines are as follows:

- A person must be 60 years old of age or older.
- Call us to make your reservation (847) 459-2606.
- Coupon redeemable for new participants only, and one coupon per person.
- Dine in only. Present this coupon at the time you visit us for your free lunch.

### Village of Wheeling Lunch at the Center

Wheeling Park District Community Recreation Center

**Please call to make a reservation: 847-459-2606**

Regular suggested donation for meal is \$5.00

## VOLUNTEERS NEEDED!

Part-time rewarding experience with flexible hours!

Lunch at the Center Senior Congregate Dining Program needs volunteers to serve lunch

**Mondays – Fridays**  
**from 10 a.m. – 2 p.m.**

This is an excellent opportunity to meet new friends, be part of a great team, and have some fun.  
No experience required.

Please call Senior Services at 847.459.2606 for more information.

## Wanted: Houses Seeking Curb Appeal

Applications are available now for the Community Paint-a-thon. If the exterior of your house needs to be painted due to peeling, fading, or worn paint, consider applying. The program provides for painting the exterior of single-family homes at no cost to those who qualify.

To qualify, homes must be owned and occupied by people with limited financial resources, and the owners must be at least 60 years of age or have a permanent disability that hinders them from doing the work themselves. Once a home is determined eligible, volunteer teams do the scraping, priming, and painting of the house. The Paint-a-thon is a major community-wide event. Teams of volunteers are recruited from businesses, churches, social, and civic groups.

If you are interested in volunteering, please contact Danzella Graham at HandsOn Suburban Chicago at [donnie@handsonsuburbanichicago.org](mailto:donnie@handsonsuburbanichicago.org). If you or someone you know needs their home painted, please contact Catholic Charities at 847.253.5500 or visit [catholiccharities.net/ccnw](http://catholiccharities.net/ccnw) for more information.

# WE'RE HIRING

AD SALES EXECUTIVES

BE YOURSELF. BRING YOUR PASSION.  
WORK WITH PURPOSE.

- Paid Training
- Some Travel
- Work-Life Balance
- Full-Time with Benefits
- Serve Your Community



 Contact us at [careers@4lpi.com](mailto:careers@4lpi.com)  
[www.4lpi.com/careers](http://www.4lpi.com/careers)

## GROW YOUR BUSINESS BY PLACING AN AD HERE!

### CONTACT US!

Contact Teresa Perkins  
to place an ad today!  
[tperkins@lpicommunities.com](mailto:tperkins@lpicommunities.com)  
or (800) 950-9952 x2611



# Thrive *Locally*

## Castro Construction & Design

For all your  
Home Remodeling Needs  
Give us a Call

(224) 676-1454

• Local to Wheeling •

# NEVER MISS A NEWSLETTER!

Sign up to have our newsletter emailed  
to you at [www.mycommunityonline.com](http://www.mycommunityonline.com)



## FREE AD DESIGN

WITH PURCHASE OF THIS SPACE

 CALL 800.950.9952

### ADT-Monitored Home Security

Get 24-Hour Protection  
From a Name You Can Trust

- Burglary
- Fire Safety
- Flood Detection
- Carbon Monoxide



 Authorized  
Provider

SafeStreets

1-855-225-4251



For ad info. call 1-800-950-9952 • [www.lpiseniors.com](http://www.lpiseniors.com)

Village of Wheeling, IL

A 4C 01-1335

# SUPPORT OUR ADVERTISERS!



**GROW YOUR BUSINESS BY PLACING AN AD HERE!**



**CONTACT US!**

Contact Teresa Perkins to place an ad today!  
 tperkins@lpicommunities.com  
 or (800) 950-9952 x2611

**FREE AD DESIGN**

WITH PURCHASE OF THIS SPACE

**CALL 800.950.9952**

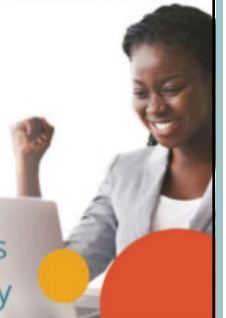
**Thrive Locally**

**WE'RE HIRING**

AD SALES EXECUTIVES

**BE YOURSELF. BRING YOUR PASSION. WORK WITH PURPOSE.**

- Paid Training
- Some Travel
- Work-Life Balance
- Full-Time with Benefits
- Serve Your Community



Contact us at [careers@4lpi.com](mailto:careers@4lpi.com)  
[www.4lpi.com/careers](http://www.4lpi.com/careers)



In the Heart of the New Downtown Wheeling

Space available  
 5500 sq ft • 3000 sq ft  
 1750 sq ft • 7300 sq. ft.  
 May divide. Call with Size Requirements

**Tenant Roster**

- Boost Mobile
- Carniceria Jimenez
- Concentra Medical, P.T/O.T.
- Fabulous Hair Salon
- Familia Dental
- Five Star Nails
- Little Caesars Pizza
- Mark Drug & Medical Supply
- Northwest Insurance Network
- SalonCentric
- Stella's
- Wingstop
- 1900's Barber Parlor

- Across the street from 1000 new apartments
- Across the street from the New Town Center
- Anchored by Carniceria Jimenez with 37,100 sq. ft.
- Across from Metra Station
- Daily traffic count of 70,000 cars
- Market includes Buffalo Grove, Northbrook, Prospect Heights & Arlington Heights
- Parking for over 400 cars
- Easy access from Rt. 53, 1-94 & I-294
- Excellent retail visibility

**Demographics**

	1 Mile	3 Miles	5 Miles
Average Income	\$85,088	\$107,330	\$116,180
Population	17,382	103,722	274,540

A \$5,000 donation will be given to the Leukemia Research Foundation for each store leased through this ad.



For information call:  
 Mike or Jeff Kolodny 773-777-6160

Not affiliated with Hallmark & Johnson Properties, Lincolnwood



Love & Respect,  
 Dream Building Too  
 Safe, Cheerful, Warm  
 Our Promise to You

Serving the Wheeling Community Since 1983

Family Owned since 1965

Ages 6 weeks – 12 Years

6:30 a.m. until 6:00 p.m.

404 S. Elmhurst Rd • Wheeling IL 60090

847-520-4466 • [www.pokolokochildcare.com](http://www.pokolokochildcare.com)

Family Owned Since 1966  
**JOE'S PIZZERIA**

Wheeling  
 847-537-1477

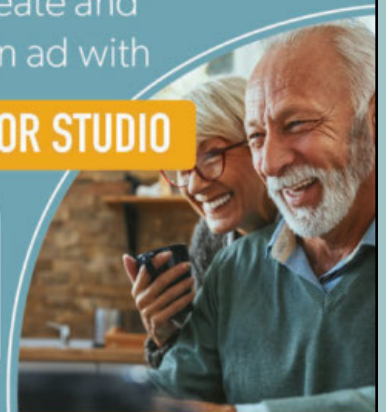
Visit our web site for a full menu  
 J&J Video Gaming  
[www.joespizzaUSA.com](http://www.joespizzaUSA.com)

Ranked 2nd with Hungry Hound  
**10% OFF** coupon for your order today  
 expiration 06/30/22

**Place Your Ad Here and Support our Community!**

Instantly create and purchase an ad with

**AD CREATOR STUDIO**



[lpicommunities.com/adcreator](http://lpicommunities.com/adcreator)



For ad info. call 1-800-950-9952 • [www.lpiseniors.com](http://www.lpiseniors.com)

Village of Wheeling, IL

B 4C 01-1335

# COMMUNITY DEVELOPMENT & PUBLIC WORKS

## Residential Document Destruction Event

On Saturday, May 7, the Solid Waste Agency of Cook County (SWANCC) and Village of Wheeling are hosting a document destruction (shredding) recycling event at the Department of Public Works, 77 W. Hintz Road, from 9 a.m. 12 p.m. There is NO ELECTRONIC WASTE COLLECTION.

Residents from Wheeling and other SWANCC communities are eligible to participate. Materials will not be accepted from non-SWANCC residents, or from businesses, schools, or institutions. IDs will be checked for verification of residency, and those persons not from a SWANCC community will be redirected to an exit.

To ensure a successful event, please read the requirements below. If paper is not prepared correctly, you will not be able to participate, and will be asked to exit the event.

Residents are limited to six file-size boxes or paper grocery bags of “sensitive documents.” Sensitive documents include medical, retired tax or financial planning records, or documents with personal information, etc.

- Documents must be dry, clean, and loose, i.e. not in binders or folders.
  - Remove all metal clips; staples are acceptable.
  - Remove all plastic covers, sleeves, folders, or binders.
- Documents must be contained in the trunk of the vehicle for accessibility (see safety guidelines below).
- NO magazines, newspapers, junk mail/ads/coupons, greeting cards, store receipts, photos, or books.
- NO x-ray photos, personal photos or family albums, photo negatives, plastic credit or gift cards, plastic covers from checkbooks, or similar materials.
- Paper must be free of contamination such as batteries, electronics, medications, sharps, etc. that may pose a health and safety concern to those handling the paper documents.
- Absolutely NO plastic bags!
- Boxes will be returned to residents.

Onsite staff will remove documents from vehicle trunks and place them in totes that will be emptied into a shredding truck where the documents will be cross-shredded. Documents will be placed in a tote and, once totes are full, will be loaded into a shredding truck onsite. The paper will be cross-shredded, baled, and recycled.

For safety purposes, place documents in your trunk, remain in your vehicle, and be able to unlock the trunk from inside the vehicle to allow staff to unload the items from the trunk. Residents are not allowed to exit vehicles or remain parked onsite to observe documents being shredded. Please hold your pet back if you have your windows open onsite with staff.

The site/event coordinator may refuse service if any resident fails to comply with the safety guidelines.

In anticipation of high participation, plan for delays or longer waiting times during the event. It is recommended that you arrive no later than 11 a.m. to ensure participation. The event will conclude promptly at NOON. Please contact Public Works at 847.279.6900 with any questions. For additional electronic and document destruction events scheduled by SWANCC, visit [www.swancc.org](http://www.swancc.org) or contact 847.724.9205.

## Summer Watering Restrictions

To further water conservation efforts, the Village has implemented an even-odd address watering restriction which is in effect from May 15 through September 15.

- Residents with street addresses that end with an **even number** (0, 2, 4, 6, and 8) can only water on even-numbered calendar days.
- Residents with street addresses that end with an **odd number** (1, 3, 5, 7, and 9) can only water on odd-numbered calendar days.
- Watering is prohibited from 12–6 p.m. every day.

The watering of newly-laid sod is permitted at any time and on any day upon the issuance of an appropriate permit, and for a time not to exceed two consecutive weeks. Contact the Department of Community Development with any questions about water restrictions at 847.459.2620.

## Annual Water Report

The Consumer Confidence Report (CCR) is a document published annually that provides consumers with information about the source and quality of their local drinking water. According to the U.S. Environmental Protection Agency Consumer Confidence Report Rule, every municipal water supplier must provide an annual report by July 1 concerning the previous year's information. The CCR summarizes chemical and bacteriological contaminants, regulation compliances, educational health information, and water system contact information. The CCR can be found at:



<https://www.wheelingil.gov/DocumentCenter/View/853/2021-Annual-Water-Quality-Report-PDF>

If you have any questions regarding the report, please contact Public Works directly at 847.279.6900.

## Parkway Tree Planting

The Village's contractor will plant parkway trees during May and June. To maintain a diverse urban forest, a variety of species are selected for planting. The installation process can cause stress to a newly-planted tree, and the recovery rate and establishment ability of the tree can vary per species.



If a tree has been recently planted in the parkway adjacent to your property, the following guidelines should be followed to assist in continued tree growth and smooth transition to its location within the street parkway:

- Watering is a key component to the survival of any newly-planted tree. Each newly-planted parkway tree will receive a slow-release watering bag that holds approximately 15 gallons of water. Filling the bag once a week with water during the first growing season is essential to the tree's ability to establish a healthy root system and overall tree health. Residents are asked to fill these bags weekly until the bags are removed in the fall.
- If mulch is placed at the base of the tree, make sure not to mound the mulch too high against the tree trunk.
- Do not use fertilizers, pesticides, or weed control chemicals to treat the area immediately around the new tree.
- Do not prune the tree.

Please contact Public Works at 847.279.6900 with any questions or concerns.

## Refuse and Recycling Guidelines Reminder

- All refuse, recycling and landscape waste must be placed at the curb for collection no earlier than 5 p.m. the evening before and no later than 6 a.m. the day of a scheduled collection. This includes bulk items or household construction debris as permitted through Waste Management.
- All refuse and recycling must be placed inside designated containers with the lids completely closed for scheduled collections.
- All empty carts and refuse items not collected must be removed before 8 a.m. the day after a scheduled collection. In residential areas, on days other than collection days, all waste containers along with bulk items or household construction debris shall be kept in the garage or adjacent to the front of a principal structure within the side or rear of any lot. No containers or waste shall be stored in front of a principal structure or within the front yard area of any single-family property. Code enforcement may be contacted at 847.459.2620.
- If a collection was missed, contact Waste Management directly at 800.796.9696.
- On all other days, carts and bulk waste items shall be kept in the garage or adjacent to a principal structure within the side or rear yard of any lot only.
- Containers of mixed refuse or refuse separately contained in boxes will not be collected.

## Annual Hydrant Flushing

The Public Works Utility Division will be flushing hydrants throughout the Village through May 16, weather permitting. During this time, hydrant flushing will occur between the hours of 7 a.m. and 3:30 p.m. and will continue until all portions of the water distribution system have been completed. Signs will be posted throughout the Village while hydrant flushing is underway.



Flushing is an important preventative maintenance process and is undertaken to remove particulate matter and corrosion from the system. Residents may notice slightly lower pressure and discoloration of their water throughout the duration of the program; however, the water will be completely safe to drink. Residents are advised to check the color of the water before beginning laundry to prevent any staining.

Should you have concerns regarding the flushing program, contact the Utility Division at 847.279.6900.

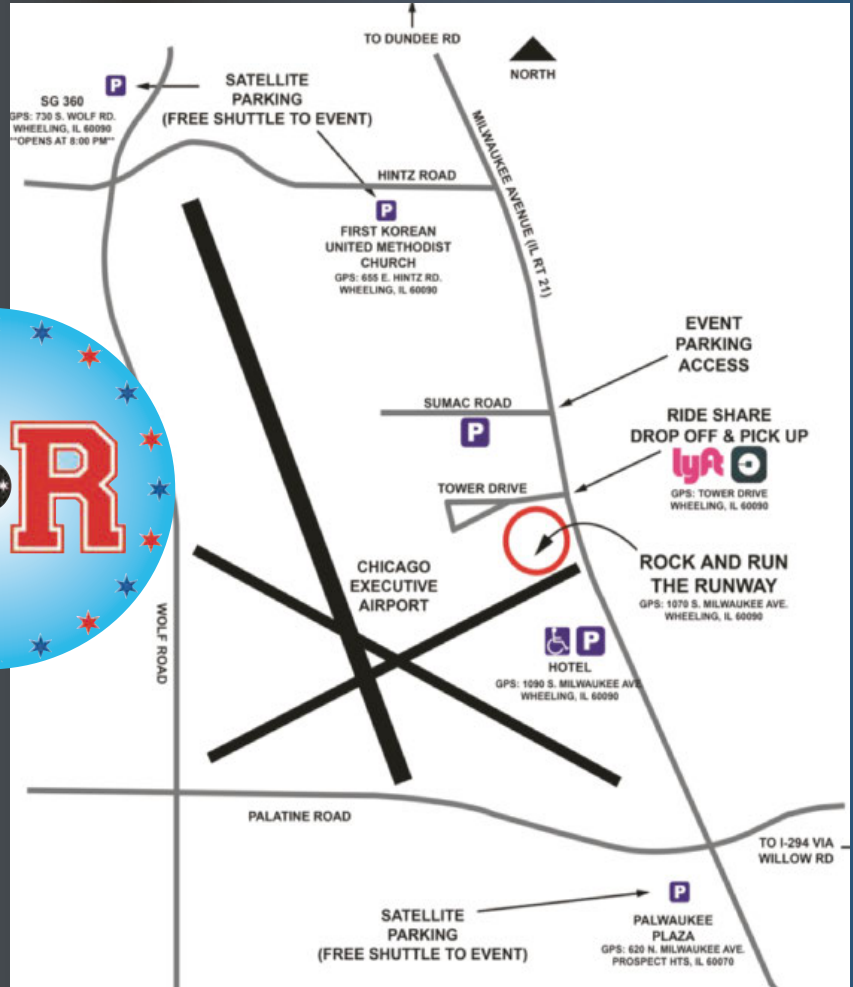
# COMMUNITY NEWS & EVENTS

## ROCK 'N' RUN THE RUNWAY EVENT INFORMATION

The Village of Wheeling, the City of Prospect Heights, and Chicago Executive Airport are thrilled to bring back the annual joint community fireworks event, Rock 'n' Run the Runway, on June 25. The day will begin with a 5K run on an airport runway at 8 a.m., and pick back up with food trucks, balloon artists, face painters, a static vehicle display, and live music by Gone Country and Mike & Joe! Evening festivities begin at 5 p.m. Fireworks will take place at approximately 9:15 p.m. There will be plenty of parking options which include overflow parking lots offering free shuttle buses to and from the event location. Bring your family, lawn chairs, and an appetite! No outside food or drink, coolers, pets, or drones allowed.



Visit [www.rocknruntherunway.com](http://www.rocknruntherunway.com) for more information.



**CHICAGO EXECUTIVE AIRPORT**

**RUN THE RUNWAY**

**#RTRCEA**

**5K**

**1 MILE**

**SATURDAY, JUNE 25, 2022**

**5K Run & 1 Mile Walk START: 8AM**

## CHICAGO EXECUTIVE AIRPORT

SIGN UP AT [CHIEXEC.COM/RTRCEA2022](http://CHIEXEC.COM/RTRCEA2022)

If you've ever wanted to run or walk on an actual airport runway, your opportunity has arrived! Our USATF certified 5k course is chip timed and the 1 mile walk includes the runway too!

Strollers are welcome!



# WE ARE HERE TO SERVE YOU!

## Village Manager

Jon A. Sfondilis  
jsfondilis@wheelingil.gov

## Fire Department

499 S. Milwaukee Avenue  
847.459.2662 (non-emergency)

- Fire codes
- CPR classes

## Police Department

1 Community Blvd.  
847.459.2632 (non-emergency)

- Citizens Police Academy
- Graffiti removal
- Neighborhood watch

## Human Services

847.459.2606

- Social Services
- Community Assisted Relief Efforts

## Public Works Department

77 W. Hintz Road

847.279.6900, 7 a.m. to 3:30 p.m. M - F

- Fire hydrant flushing
- Street/pothole repairs
- Streetlight maintenance
- Snow plowing
- Forestry & landscape
- Sanitary sewer service televising
- Water quality concerns
- Flooding
- Capital Improvements Division
- Cable TV
- Waste Management

## Senior Programs

Wheeling Park District  
100 Community Boulevard  
847.459.2670

## 847.459.CODE

to report code violations

## Village Hall Offices

2 Community Boulevard  
www.wheelingil.gov  
Phone: 847.459.2600  
Fax: 847.459.9692  
Open 8 a.m. to 5 p.m. M - F

## Administration

847.499.9082

- Village Manager's office
- Liquor licenses
- Voter registration
- Employment opportunities
- Freedom of Information requests,  
foia@wheelingil.gov
- Photo submissions, fb@wheelingil.gov

## Finance Department

847.459.2627

- Water bills
- Real estate transfer stamps
- Metra parking passes
- Pet licenses

## Community Development

847.459.2620

- Building, engineering, sign permits
- Business & rental property licenses
- Building codes & zoning information
- Property maintenance
- Flood maps & zone determination
- Health Division
- Planning Division

## Economic Development

847.459.2605

- Available buildings
- Demographics
- Development inquiries
- TIF district information
- 6b tax exemption applications

## Fire Prevention Bureau

847.459.2669

- Fire alarm & sprinkler permits
- Inspections

## Village Board

Village President Pat Horcher  
847.499.9095  
phorcher@wheelingil.gov

Clerk Kathryn Brady  
847.499.9231  
kbrady@wheelingil.gov

## Trustees

**Mary Krueger:** 847.499.9232  
mkrueger@wheelingil.gov

**Ray Lang:** 847.499.9236  
rlang@wheelingil.gov

**Mary Papantos:** 847.499.9235  
mpapantos@wheelingil.gov

**Jim Ruffatto:** 847.499.9233  
jruffatto@wheelingil.gov

**Joe Vito:** 847.499.9234  
jvito@wheelingil.gov

**Dave Vogel:** 847.499.9237  
dvogel@wheelingil.gov

## Outside Agencies

### Wheeling Park District

100 Community Boulevard  
847.465.3333

### Indian Trails Public Library

355 Schoenbeck Road  
847.459.4100

### Chicago Executive Airport

847.537.2580

**Noise Hotline:** 847.537.2580 x 117

### Chamber of Commerce

2 Community Blvd., Suite 203  
847.541.0170

### Wheeling Township

1616 N. Arlington Hts. Rd.  
847.259.7730

www.wheelingtowship.com

- Tax Assessor's office
- Senior & disability services
- Public aid



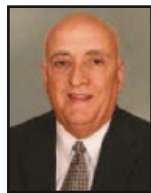
Mary C.  
Krueger



Ray  
Lang



Mary M.  
Papanos



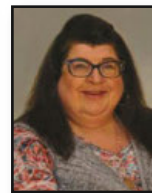
Jim  
Ruffatto



Joe  
Vito



Dave  
Vogel



Kathryn M.  
Brady



Jon A.  
Sfondilis

PRSR-T-STD  
US POSTAGE  
PAID  
PERMIT NO. 053  
WHEELING, IL

\*\*\*ECRWSS\*\*\*

CARRIER ROUTE PRE-SORT

Local Postal Patron  
Wheeling, IL 60090

**FREE AD DESIGN**

WITH PURCHASE OF THIS SPACE

**LPi CALL 800.950.9952**

**WE'RE HIRING**

AD SALES EXECUTIVES

BE YOURSELF. BRING YOUR PASSION.  
WORK WITH PURPOSE.

- Work-Life Balance
- Paid Training
- Full-Time with Benefits
- Some Travel
- Serve Your Community

Contact us at [careers@4lpi.com](mailto:careers@4lpi.com)  
[www.4lpi.com/careers](http://www.4lpi.com/careers)

**GROW YOUR  
BUSINESS  
BY PLACING  
AN AD HERE!**

**CONTACT US!**

Contact Teresa Perkins  
to place an ad today!  
[tperkins@picommunities.com](mailto:tperkins@picommunities.com)  
or (800) 950-9952 x2611

Top 1% of Sales in  
Coldwell Bankers  
Worldwide Network

**Connie Hoos**  
(847)732-3776

**Hoos**  
RESIDENTIAL TEAM

Selling Wheeling  
Since 1977

Free  
Consultation

mówimy  
po polsku

Se Habla  
Español



YOU DESERVE THE BEST IN REAL ESTATE SERVICE  
WE ARE HERE TO PROVIDE IT!



@HoosRealEstateTeam ConnieHoos.com



For ad info. call 1-800-950-9952 • [www.lpiseniors.com](http://www.lpiseniors.com)

Village of Wheeling, IL

C 4C 01-1335