



*Revolving Around
Community*

THE WHEELING CIRCULAR

November/December 2022



*The Village President and Board of Trustees invite you to
Usher in the holiday season with*

LIGHTS

Around Wheeling

**FESTIVITIES BEGIN AT 4:30PM ON SUNDAY,
NOVEMBER 20TH AT FRIENDSHIP PARK
(NORTHEAST CORNER OF DUNDEE & MILWAUKEE)**

WWW.WHEELINGIL.GOV

WELCOME TO WHEELING



*President
Patrick Horcher*

From the Desk of President Horcher

Autumn has come to Wheeling, bringing sweater weather, decorative gourds, and the end of construction season. I'm happy to report that the Illinois Department of Transportation's two-year project to reconstruct Wolf Road is nearly finished, and the roadway has been completely reopened. These major improvements—which come a few months after the completion of upgrades to Lake Cook Road—will deliver significant benefits to Wheeling for many years, and we're grateful for the patience of our residents, businesses, and schools while the project was underway. The Village has been busy with its own projects too, which this year included street improvements in several subdivisions in northeast Wheeling, replacement of decorative paver bricks on North Milwaukee Avenue, and repairs to sidewalks in Hollywood Ridge and the pedestrian bridge over Dundee Road to London Middle School.

The Village's financial situation remains strong, thanks mostly to higher-than-expected sales and income tax revenue. The Level the Playing Field for Illinois Retail Act—which requires most online retailers to collect local sales taxes—has finally enabled the Village to benefit from these transactions, and although the General Assembly still hasn't completely restored municipalities' due share of state income tax receipts through the Local Government Distributive Fund, strong growth in individual and corporate earnings has led to healthy revenues. Whenever possible, of course, we use grants and other alternate sources to fund needed projects while sparing our residents the full burden of costs; for example, we recently received the second half of nearly \$5.3 million in federal funds under the American Rescue Plan Act, which we'll use to construct a freestanding Fire Station 42 on McHenry Road and to replace aging water mains. We'll continue to seek funding for projects large and small, from adding electric vehicle charging stations at Village buildings to reconstructing major roadways and other infrastructure.

Speaking of economic growth, it's been encouraging to see new businesses and other facilities opening in Wheeling as the pandemic loosens its grip. This year Cinergy Entertainment, Kopa Tea Bar, Kitchen House, Thai Buri, Moe's Café, Crumbl Cookies, Mochinut, Fire Crust Pizza, Yu's Mandarin, the Starbucks by the Westin hotel, and District Brew Yards have all opened or are getting close to opening; I encourage everyone to pay them a visit. Construction is underway on the new School District 21 administration building at the London Crossing mixed-use development, with much more work to follow at that site. And I was pleased to join other Village officials and staff in welcoming Heartland Animal Shelter from Northbrook to its new facility on Palwaukee Drive; Heartland provides care and finds good homes for dogs and cats in need, and also helps their new people to be informed and responsible pet owners. I'm glad that Wheeling will be the home base for their valuable services.



*Members of the Wheeling Village Board
attended a ribbon-cutting ceremony for
Heartland Animal Shelter.*

Wheeling got a pleasant surprise over the summer when Chicago magazine picked us as one of the top suburbs in the region for buying a home, praising our convenient location and many amenities. Indeed, the Village always works to be welcoming to new arrivals, from our recent adoption of Cook County's "United Against Hate" campaign to the Police Department's enlistment of Olive, a certified facility dog who'll help our officers and social workers comfort and connect with residents. The Village also helps foster community spirit through our special events, including two in the coming weeks: Lights Around Wheeling on Sunday, November 20, and Santa on Your Street from December 12–16; you can find more information about both on the cover and on Page 10 of this newsletter. I encourage everyone to gather in neighborly fellowship this winter and keep an ear out for jingling bells.

The Village Board and I look forward to seeing many of you at Friendship Park on November 20, and we wish you and your loved ones well in these final weeks of 2022!

WELCOME TO WHEELING

Welcome New Businesses!

- | | |
|---|--|
| <p>Allegro Design & Construction
1040 S. Milwaukee, Ste 115
Waterproofing solutions
773.671.6270</p> <p>Allstar Asphalt, Inc.
165 W. Hintz Road
Asphalt contractor
847.419.6862</p> <p>Artech Dental Studio
1040 S. Milwaukee, Ste. 210
Dental lab
847.808.8858</p> <p>ASAP Fitness Inc.
650 S. Wheeling Road
Sports training
319.621.4475</p> <p>ASG & Associates Inc.
425 S. Milwaukee, Ste. 3
Insurance agency
847.465.1484</p> <p>B and B Promotions
851 Seton Court, Ste. 1A
Office/storage
847.818.1825</p> <p>C&F Towing and Recovery
851 Seton Court
Dispatching office
312.451.1720</p> <p>Chiro4Health
650 S. Wheeling Road
Chiropractor
847.239.0888</p> <p>District Brew Yards
700 N. Milwaukee Ave.
Brewery and food hall
847.663.5200</p> <p>D.K. Home Remodeling
303 Messner Drive
Bathroom remodelers
630.533.0016</p> <p>Emergency Plumbing
200 Larkin Dr., Unit E
Full-service plumbers
312.532.6435</p> | <p>Fantasy Auto Detail
173 Wheeling Rd., Unit 173
Car wash detailing
224.409.4767</p> <p>Golden EZ Cargo Forwarders
190 Shepard Ave., Ste. D
Transportation/exporter
224.313.5976</p> <p>Jugaadu Slots & Video Poker
860 S. Wheeling Road
Video gaming
847.754.0600</p> <p>Korea Times of Midwest
1038 S. Milwaukee Avenue
Media business
847.290.8282</p> <p>Lightning Protection Systems
490 W. Hintz Road
Lightning protection installer
847.707.6736</p> <p>No Bull Health & Fitness
650 Wheeling Rd., Unit C
Training and health coach
224.330.5806</p> <p>Social Bar & Grill
401-411 W. Dundee Road
Sports restaurant
773.332.3055</p> <p>Solful Gifts
1040 S. Milwaukee, Ste. 100C
Natural crystal sales
847.924.5708</p> <p>Stein & Cherney Ltd.
401 S. Milwaukee, Ste 250
Law firm
847.229.1112</p> <p>Sunnyside Corporation
70 Messner Drive
Raw material storage
847.541.5700</p> |
|---|--|

The Clerk's Corner November 8 Election

Voter Registration

Grace period registration is available at early voting locations until November 7; after registering you must immediately cast your ballot. Election Day registration is available at your home precinct only. Bring two forms of identification, at least one showing your current address.



*Village Clerk
Kathryn M. Brady*

Early and Mail Voting

Early voting for the November 8 Gubernatorial Election runs until November 7. Early voting locations can be found online at cookcountyclerk.com. Locations near Wheeling include the Arlington Heights, Northbrook, and Mount Prospect Village Halls.

Election Day

On Tuesday, November 8 polls are open from 6 a.m.–7 p.m. If you are unsure of your precinct and polling location, please contact Deputy Clerk Karen Henneberry at 847.499.9085 or visit cookcountyclerk.com, where you can also verify your registration and view a sample ballot. All voters are encouraged to verify their registration before arriving at the polls.

Health Happenings Community Blood Drive

The Wheeling Board of Health is hosting a blood drive from 2 to 7 p.m. on Wednesday, November 2 at the Village Hall. Appointments are recommended but not required. Face masks are optional.



Blood donors of all types are needed for critically ill patients, accident victims, people needing surgery, and patients suffering from chronic diseases such as cancer and leukemia. Every pint of blood donated will help save three lives!

To schedule an appointment, contact Health Officer Serena Ivaldi at sivaldi@wheelingil.gov. You may also register online at www.vitalant.org, using code ORD0WH98.



POLICE & FIRE DEPARTMENTS

Holiday Donations Needed

At times throughout the year, the Village of Wheeling Social Services Division provides economic support to families in need in the form of gift cards to local stores such as Walmart, Aldi, Walgreens, CVS, etc. Wheeling social workers receive these cards as donations from civic groups and generous residents. These cards are used when residents have difficulties making ends meet during a crisis. The year 2022 has been difficult for residents still dealing with the aftereffects of the pandemic, and our supply of gift cards has been severely impacted by the community need. If you are in a position to make a donation of a gift card to support another Wheeling resident, please consider giving this year. If you know someone in the Village who is in need of resources during this trying time, please refer them to our services. Please call 847.459.2606. Social workers are available Monday-Friday 9 a.m. – 9 p.m.



Wheeling Police Social Services Division

The Social Services Division offers many services to residents of the Village of Wheeling who need assistance, including:

**assessment • case management • crisis intervention • community linkage / information and referral
court advocacy • short-term counseling • tangible and basic needs • victim services • support groups**

The Social Services Division has professional social workers who work closely with the Police and Fire Departments as well as schools and community agencies to serve residents of Wheeling. If you need assistance, please feel free to contact the Wheeling Police Department Social Services Division at 847.459.2606. Offices are located at 1 Community Boulevard inside the Wheeling Police Department. Se habla Español.

Winter & Holiday Safety Tips

With the arrival of winter and the holiday season comes the arrival of snow and ice, too. With some planning and advanced preparation, you can make this a safe and fun-filled season.

- **Inspect holiday lights before installing them.** Check for damaged wires or missing bulbs. Do not exceed the manufacturer's recommendations for how many strings of holiday lights can be strung together.
- **Avoid using space heaters if at all possible.** Do not use kerosene or propane heaters indoors. Keep all space heaters away from combustible materials, and only use space heaters when the room is occupied. Finally, do not plug them into power strips or electrical multi-adapters.
- **Dispose of leftover gasoline from your lawnmower or snow blower by carefully pouring it into your vehicle's fuel tank.** Never pour old gasoline into the sewer system.
- **Dispose of holiday wrappings and trees appropriately.** Never throw them into a fireplace or wood-burning stove since they burn too fast, generate too much smoke, and may overload the capacity of the fireplace or stove.
- **Dispose of fireplace or wood-burning stove ashes appropriately.** Ashes that appear to be cold can actually still be a fire risk more than 24 hours later. Do not place them in garbage cans in your home or garage, in case they re-ignite.
- **Do not call 9-1-1 if the electrical power goes out.** Instead, call ComEd at 1-800-EDISON1.
- **Have your home furnace or boiler professionally serviced and cleaned.** A service technician can verify that dangerous carbon monoxide (CO) gas is not backing up into your home.
- **Test and vacuum your home smoke detectors and carbon monoxide (CO) detectors.** Dust and dirt accumulated on the unit can delay its activation when needed. If you have not recently changed your detector's battery, do so. Also, if your smoke detectors are ten or more years old or your CO detectors are more than five years old, completely replace them.
- **Prepare your vehicle before the first winter storm occurs.** Check tire inflation pressure since tires lose pressure during the fall due to outside temperature fluctuations. Also check the remaining tire tread and consider replacing if they are old or worn. Keep your fuel tank above half-full at all times to minimize moisture in your fuel tank and reduce the risk of your fuel line freezing up. If your battery is old, now is a great time to replace it as car batteries are greatly affected by cold temperatures.
- **Place a winter emergency kit inside each family vehicle.** Include a blanket, collapsible snow shovel, ice scraper, jumper cables, flashlight (with new batteries), road flares, basic first aid kit, cellphone charger, and basic non-perishable food or snacks.
- **Use candles with great care.** Always place in a sturdy, non-combustible holder, and never leave them unattended.

Snow Season Procedures

Public Works snow and ice responsibilities include roadway de-icing and clearing arterial, collector, and residential roadways, certain sections of public sidewalks, the train station, and Village-owned buildings and properties. Public Works is not responsible for the maintenance of or snow control on county- or state-owned roadways or rights-of-way. These roadways include:

Illinois Department of Transportation (IDOT) 847-705-4222

- Dundee Road (Route 68)
- Milwaukee Avenue (Route 21)
- Palatine Road including East and West Palatine frontage
- Wolf Road (Manchester North to Milwaukee Avenue; South of Marquardt to Camp McDonald Road)
- Elmhurst Road (Route 83)
- McHenry Road (Route 83)

Cook County Highway Department 847-827-1164

- Lake-Cook Road
- Hintz Road
- Buffalo Grove Road
- Aptakisic Road
- Schoenbeck Road
- Camp McDonald Road
- Old Buffalo Grove Road

Residents are advised of the following safety tips during the snow season:

- Stay 100 feet or more behind a snowplow or salt truck.
- When it is safe, shovel snow away from fire hydrants near your property for emergency access.
- Do not place refuse, refuse containers, or any other items in the street.

Vehicle Parking Restrictions

- Do not park on any Village street within eight hours after a snowfall of two inches or more to allow safe and efficient snow and ice control by Public Works.
- Vehicles in violation of this restriction may be towed by the Police Department.
- For additional information, contact the Wheeling Police Department at 847.459.2632.

Sidewalk Requirements

- Residents and property owners are responsible for clearing snow and ice from sidewalks adjoining or adjacent to their property by 10 a.m. the day after a snowfall. Property owners are permitted to spread sand, salt, or other substances made for the purpose of melting snow and ice on sidewalks.
- Residents and property owners shall not deposit snow or ice onto any roadway within the Village; instead, deposit snow and ice onto the parkway.

For additional information, contact Community Development at 847.459.2620.

Protect Water Lines from Freezing

Follow these measures to protect water lines from freezing and prevent water pipes from rupturing during extreme cold:

- Monitor water meters: Wrap water meters with foam insulation or heat tape if located in unheated or colder areas such as crawlspaces. Periodically check your meter and associated piping for cracks or leaks and ensure proper marking and operation of the shut-off valve in case a pipe bursts.
- Eliminate drafts: All crawlspace and basement vents, windows, and doors should be repaired and closed, making sure a tight seal exists to keep out cold air.
- Insulate pipes: Insulating pipes in colder or unheated areas such as the crawlspace, or pipes located adjacent to an outside wall, helps to reduce the possibility of ruptured pipes. Allow warm air to circulate around pipes accessible by cabinets and located against outside walls.
- Leave faucets running: A continuous trickle of cold water can help reduce the possibility of a pipe bursting due to freezing.

If you know that a property has been unoccupied for several days, contact Public Works at 847.279.6900 so they can verify if water services are shut off at the property. This can prevent costly damage to the unoccupied property.

Dr. Malik Zayed & Associates

FOOTCARE AT HOME

Stop walking in pain, get the care and relief you deserve. Call Dr Zayed's office today to receive foot care in the comfort of your own home

- * Bunions
- * Diabetic Foot Care
- * Heel Pain
- * Foot & Ankle Problems
- * Nail Problems

Call 773.725.2953

to schedule your appointment

All Insurance Is Accepted



THRIVE
LOCALLY

Yellow Blu
Clinic&Spa



- HydraFacial -
- OxyGeneo -
- Deep Cleaning Facials -
- PRX-T33 -
- Chemical Peels -
- Radiofrequency -
- Microneedling -
- Microdermabrasions -
- Dermaplaning -
- Laser Hair Removal -
- Body Sculpting -
- Cellulite Reduction -
- Acne Treatment -
- Anti-Aging Programs -
- Anti-Cellulite Injections -
- Double Chin Reduction -
- Hair Restoration -
- SmoothGlo -
- Ulthera -
- IPL -
- Botox / Filler -
- PDO Threads -
- And Much More!

847-818-1111

1111 West Dundee Road
Wheeling, Illinois 60090

yellowblumedspa.com

ADT-Monitored Home Security

Get 24-Hour Protection
From a Name You Can Trust

- Burglary
- Fire Safety
- Flood Detection
- Carbon Monoxide



SafeStreets

833-287-3502

LET'S GROW YOUR BUSINESS

Place Your Ad Here
and Support Our Parish!

CONTACT ME
Teresa Perkins

tperkins@lpicommunities.com

(800) 950-9952 x2611



**FREE
AD DESIGN**
with purchase
of this space

CALL
800-950-9952

Castro Construction & Design

For all your
Home Remodeling Needs
Give us a Call

(224) 676-1454

- Local to Wheeling •

SUPPORT
OUR
ADVERTISERS!

CARNICERIAS
JIMENEZ

FRESHNESS • QUALITY • ATTENTION

Join our newsletter

Subscribe our newsletter to receive the latest news and exclusive offers every week.

SCAN HERE



www.carniceriasjimenez.com



info@carniceriasjimenez.com



/carniceriasjimenez



/carniceriasjimenez



For ad info. call 1-800-950-9952 • www.lpiseniors.com

Village of Wheeling, IL

A 4C 01-1335

SUPPORT OUR ADVERTISERS!

NEVER MISS OUR NEWSLETTER!

SUBSCRIBE

Have our newsletter emailed to you every week.



Visit www.mycommunityonline.com



Space available
5500 sq ft • 3000 sq ft
1750 sq ft • 7300 sq. ft.
May divide. Call with Size Requirements

Tenant Roster

- Boost Mobile
- Carniceria Jiminez
- Concentra Medical, P.T/O.T.
- Fabulous Hair Salon
- Familia Dental
- Five Star Nails
- Little Caesars Pizza
- Mark Drug & Medical Supply
- Northwest Insurance Network
- SalonCentric
- Stella's
- Wingstop
- 1900's Barber Parlor

- Across the street from 1000 new apartments
- Across the street from the New Town Center
- Anchored by Carniceria Jiminez with 37,100 sq. ft.
- Across from Metra Station
- Daily traffic count of 70,000 cars
- Market includes Buffalo Grove, Northbrook, Prospect Heights & Arlington Heights
- Parking for over 400 cars
- Easy access from Rt. 53, 1-94 & I-294
- Excellent retail visibility

Demographics

	1 Mile	3 Miles	5 Miles
Average Income	\$85,088	\$107,330	\$116,180
Population	17,382	103,722	274,540

A \$5,000 donation will be given to the Leukemia Research Foundation for each store leased through this ad.



For information call:
Mike or Jeff Kolodny 773-777-6160

Not affiliated with Hallmark & Johnson Properties, Lincolnwood




Love & Respect,
Dream Building Too
Safe, Cheerful, Warm
Our Promise to You
Early Learning Centers
Serving the Wheeling Community Since 1983
Family Owned since 1965
Ages 6 weeks – 12 Years
6:30 a.m. until 6:00 p.m.
404 S. Elmhurst Rd • Wheeling IL 60090
847-520-4466 • www.pokolokochildcare.com



SHORT STAFFED?

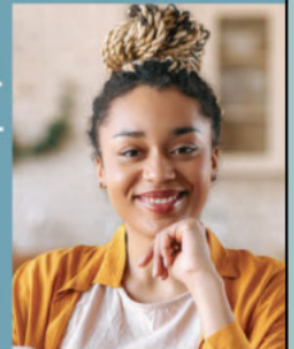
Place an ad here to find new local talent for your business.

CALL 800-950-9952

WE'RE HIRING!
AD SALES EXECUTIVES



BE YOURSELF.
BRING YOUR PASSION.
WORK WITH PURPOSE.



- Paid training
- Some travel
- Work-life balance
- Full-Time with benefits
- Serve your community

Contact us at careers@4lpi.com or www.4lpi.com/careers



Family Owned Since 1966
JOE'S PIZZERIA
Wheeling
847-537-1477
Visit our web site for a full menu
J&J Video Gaming
www.joespizzaUSA.com
Ranked 2nd with Hungry Hound
10% OFF coupon for your order today
expiration 06/30/22

Place Your Ad Here and Support our Community!

Instantly create and purchase an ad with

AD CREATOR STUDIO



lpicommunities.com/adcreator



For ad info. call 1-800-950-9952 • www.lpiseniors.com

Village of Wheeling, IL

B 4C 01-1335

Guidelines for Leaf Disposal

Village Code 11.08.100 prohibits the deposit of leaves into streets, roads, or highways, and along the shoulder, curb, or edge of any street, road, or highway.

- Leaves intentionally raked into such areas can result in clogged storm sewer drains and subsequent flooding.
- The Village's contract with Waste Management provides an alternate, convenient method to dispose of leaves and other forms of yard waste for residents who have curbside pick-up service.
- In addition to two-ply Kraft biodegradable paper yard waste bags, residents may use rigid 32-gallon containers clearly marked with a red "X" around the container.
- Containers and biodegradable bags may not exceed 45 pounds in weight when filled. There is no limit to the number of yard waste bags or containers allowed.
- Yard waste in plastic bags or cardboard boxes will not be collected.
- Brush must be bundled and tied with biodegradable twine or string. Bundles must not weigh over 45 lbs., exceed four feet in length or two feet in diameter, or contain limbs greater than three inches in diameter. There is no limit to the number of brush bundles allowed.
- Loose or larger brush or logs will not be collected by Waste Management.
- Yard waste collections conclude on November 30, 2022.

Burning Landscape Waste is Illegal in Wheeling

The burning of construction debris, garbage, paper, and landscape waste including leaves, twigs, and damaged tree limbs is not only environmentally damaging and prone to causing accidental fires, it is also illegal in Wheeling. Violators are subject to citations and fines. Please use the weekly landscape waste collection program outlined above to dispose of landscape debris.

Outdoor Fireplace Regulations

- Only dry, well-seasoned natural wood logs may be burned in an approved outdoor fireplace.
- Use in accordance with the manufacturer's operating instructions.
- Keep all portable fireplaces a minimum of 15 feet from combustible structures, playground equipment, and nearby vehicles.
- Never use gasoline to start an outdoor fireplace.
- A responsible adult must remain nearby with a fire extinguisher, bucket of water, or attached garden hose in case the fire accidentally grows too large or embers ignite anything outside the fireplace.

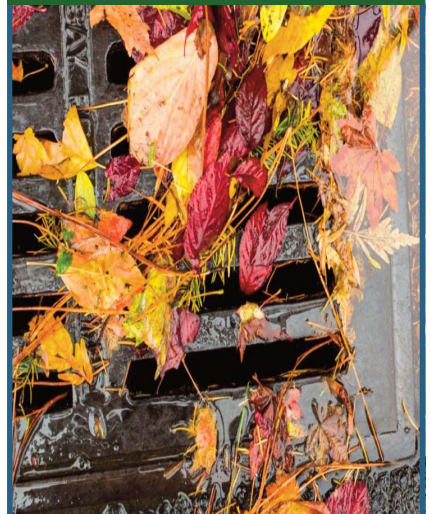
Yard Waste Collection Ends November 30

Residents are reminded that curbside yard waste collections conclude on November 30, 2022. Collections will resume April 1, 2023. It is illegal in the State of Illinois to mix yard waste in household garbage or recycling carts; **carts containing yard waste will not be serviced.**

Storm Drain Grate/Inlet Cleaning

Storm drain grates/inlets are normally located near the edge of streets or in rear yards, collecting water that uses the storm sewer system to ultimately flow into streams, rivers, or lakes. Grates/inlets obstructed with leaves and other debris can deny constant water flow and cause localized flooding. The Village encourages residents to safely clear storm sewer grates/inlets near their property to avoid local flooding issues. If a grate/inlet is obstructed, rake the debris off of the structure and onto the parkway or into a waste container. If ponding or another concern arises, contact Public Works 847.279.6900.

The Village encourages residents to help remove debris from storm sewer inlets.



COMMUNITY NEWS & EVENTS

Medicare Open Enrollment

Every year, Medicare's open enrollment period is October 15 – December 7. Medicare health and drug plans can make changes each year to cost, coverage, and what providers and pharmacies are in their networks. October 15 to December 7 is when all people with Medicare can change their health plans and prescription drug coverage for the following year to better meet their needs.

People in a Medicare health or prescription drug plan should review the materials their plans send them, like the Evidence of Coverage (EOC) and Annual Notice of Change (ANOC). If their plans are changing, they should make sure their plans will still meet their needs for the following year. If they're satisfied that their current plan will meet their needs and it's still being offered, they don't need to do anything.

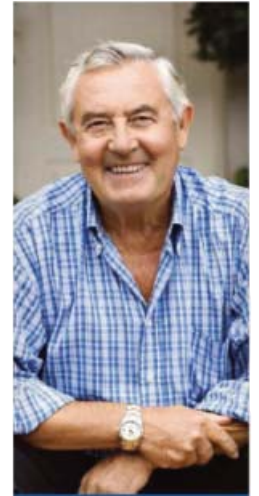
New plan information can be obtained by visiting www.medicare.gov, or by calling 1.800.MEDICARE or the Village of Wheeling Social Services Division at 847.459.2606. Call for an appointment to find the best prescription drug plan for your individual needs for 2023. Appointments are available during open enrollment on Mondays and Thursdays from 9 a.m. to 3 p.m.



"I found a better deal on prescriptions."



"We found lower co-pays."



"I found a plan that works better for me."

Medicare Open Enrollment
Oct. 15 - Dec. 7

WWW.MEDICARE.GOV
1-800-MEDICARE

Holiday Tree Collections

Non-artificial holiday trees are collected at residential curbsides by Waste Management during the first two weeks in January at no additional charge. Trees that have decorations or are in stands or plastic bags will not be collected.

Holiday Lights Recycling

Residents may recycle holiday lights—including mini, C7, C9, rope, and LED lights, as well as extension cords of all colors and lengths—at the Department of Public Works, 77 W. Hintz Road, November 1, 2022 to January 31, 2023, Monday through Friday from 7 a.m. to 3 p.m. Garland, live greens, wreaths, and other non-recyclables are not accepted in this recycling program. Call 847.279.6900 with any questions.



Holiday Solid Waste Collection Reminder

In observance of Thanksgiving Day, November 24, 2022 and Christmas day (observed) December 26, 2022, solid waste collections will be delayed by one day.

Village of Wheeling offices will be closed:

Thursday, November 24
and Friday, November 25
for Thanksgiving
&

Monday, December 26
for Christmas.

COMMUNITY NEWS & EVENTS

THE VILLAGE OF WHEELING AND THE WHEELING HISTORICAL SOCIETY PRESENT:



SANTA ON YOUR STREET

BE ON THE LOOKOUT
BETWEEN 6:00 PM AND 8:30 PM

CHECK BELOW TO FIND OUT WHEN YOUR WHOLE FAMILY CAN WATCH FROM THE COMFORT OF HOME

MONDAY DECEMBER 12TH

Chelsea Cove, Eastwood Trails, Whipple Tree Village, Lexington Commons, Cedar Run, Fairway Greens, Pine Hills, Colonial Drive, Hollywood Ridge, Arlington Club

TUESDAY DECEMBER 13TH

Dunhurst (East), Northgate Crossing, Strong (East & West), Picardy Place, Wolf Crossing, Millbrook, Prairie Park, Capri Terrace, 6th/Gendale, Shadow Bend, Edgewood Drive, Equestrian Grove

WEDNESDAY DECEMBER 14TH

Eastchester, Longtree/Kingsport Village, Lakeside Villas, Lexington Commons II, Malibu Cove, Tahoe Village, Lake in the Winds, VIP/Cornell Avenue, Jackson Drive, Hollywood Ridge 2, Dunhurst (West), Edward/Vera

THURSDAY DECEMBER 15TH

Old Town, Union Commons, Meadowbrook (East & West), Astor Place, River Mill Crossings, Wolf Run Estates, Plum Creek, Hunt Club, Harmony Village, Foxboro

FRIDAY DECEMBER 16TH

Orchard Lake, Ridgefield, Pleasant Run, Polo Run, Lake+House, Avalon-Sienna, Sandpebble Walk

FOLLOW SANTA'S VISITS IN REAL-TIME, GET INCLEMENT WEATHER UPDATES,
AND SEE SPECIFIC STREET MAPS @ WWW.WHEELINGIL.GOV/SANTA

WE ARE HERE TO SERVE YOU!

Village Manager

Jon A. Sfondilis
jsfondilis@wheelingil.gov

Fire Department

499 S. Milwaukee Avenue
847.459.2662 (non-emergency)

- Fire codes
- CPR classes

Police Department

1 Community Blvd.
847.459.2632 (non-emergency)

- Citizens Police Academy
- Graffiti removal
- Neighborhood watch

Human Services

847.459.2606

- Social Services
- Community Assisted Relief Efforts

Public Works Department

77 W. Hintz Road

847.279.6900, 7 a.m. to 3:30 p.m. M - F

- Fire hydrant flushing
- Street/pothole repairs
- Streetlight maintenance
- Snow plowing
- Forestry & landscape
- Sanitary sewer service televising
- Water quality concerns
- Flooding
- Capital Improvements Division
- Cable TV
- Waste Management

Senior Programs

Wheeling Park District
100 Community Boulevard
847.459.2670

847.459.CODE

to report code violations

Village Hall Offices

2 Community Boulevard
www.wheelingil.gov
Phone: 847.459.2600
Fax: 847.459.9692
Open 8 a.m. to 5 p.m. M - F

Administration

847.499.9082

- Village Manager's office
- Liquor licenses
- Voter registration
- Employment opportunities
- Freedom of Information requests,
foia@wheelingil.gov
- Photo submissions, fb@wheelingil.gov

Finance Department

847.459.2627

- Water bills
- Real estate transfer stamps
- Metra parking passes
- Pet licenses

Community Development

847.459.2620

- Building, engineering, sign permits
- Business & rental property licenses
- Building codes & zoning information
- Property maintenance
- Flood maps & zone determination
- Health Division
- Planning Division

Economic Development

847.459.2605

- Available buildings
- Demographics
- Development inquiries
- TIF district information
- 6b tax exemption applications

Fire Prevention Bureau

847.459.2669

- Fire alarm & sprinkler permits
- Inspections

Village Board

Village President Pat Horcher
847.499.9095
phorcher@wheelingil.gov

Clerk Kathryn Brady
847.499.9231
kbrady@wheelingil.gov

Trustees

Mary Krueger: 847.499.9232
mkrueger@wheelingil.gov

Ray Lang: 847.499.9236
rlang@wheelingil.gov

Mary Papantos: 847.499.9235
mpapantos@wheelingil.gov

Jim Ruffatto: 847.499.9233
jruffatto@wheelingil.gov

Joe Vito: 847.499.9234
jvito@wheelingil.gov

Dave Vogel: 847.499.9237
dvogel@wheelingil.gov

Outside Agencies

Wheeling Park District

100 Community Boulevard
847.465.3333

Indian Trails Public Library

355 Schoenbeck Road
847.459.4100

Chicago Executive Airport

847.537.2580

Noise Hotline: 847.537.2580 x 117

Chamber of Commerce

2 Community Blvd., Suite 203
847.541.0170

Wheeling Township

1616 N. Arlington Hts. Rd.
847.259.7730

www.wheelingtowship.com

- Tax Assessor's office
- Senior & disability services
- Public aid



Mary C.
Krueger



Ray
Lang



Mary M.
Papanos



Jim
Ruffatto



Joe
Vito



Dave
Vogel



Jon A.
Sfondilis

PRSR-STD
US POSTAGE
PAID
PERMIT NO. 053
WHEELING, IL

ECRWSS

CARRIER ROUTE PRE-SORT

Local Postal Patron
Wheeling, IL 60090



FREE
AD DESIGN
with purchase
of this space

CALL
800-950-9952



WE'RE HIRING!
AD SALES EXECUTIVES

BE YOURSELF.
BRING YOUR PASSION.
WORK WITH PURPOSE.

- Paid training
- Some travel
- Work-life balance
- Full-Time with benefits
- Serve your community



Contact us at
careers@4lpi.com or
www.4lpi.com/careers

LET'S GROW YOUR BUSINESS
Place Your Ad Here
and Support Our Parish!

CONTACT ME
Teresa Perkins

tperkins@lpicommunities.com
(800) 950-9952 x2611

Top 1% of Sales in
Coldwell Bankers
Worldwide Network

Connie Hoos
(847)732-3776



Hoos
RESIDENTIAL TEAM

Selling Wheeling Since 1977

Free Consultation

mówimy po polsku

Se Habla Español



YOU DESERVE THE BEST IN REAL ESTATE SERVICE
WE ARE HERE TO PROVIDE IT!

    @HoosRealEstateTeam ConnieHoos.com

